



**windows
of the world®**
Infinite limits.



**windows
of the world[®]**
Infinite limits.

Contents

05

About us

09

System

13

Products

23

Applications

39

Features

43

Our Vision



05

About us

Windows of the World (WOW) represents the apotheosis of window design, where form and function converge in perfect harmony. Its exceptional thermal transmission performance, sleek and modern aesthetic lines, creating a symphony of style and energy efficiency, culminating in a masterpiece that is at once beautiful and functional.



The seamless operation and advanced security features of WOW provide a fluid transition between indoors and outdoors, crafting an effortless living experience that redefines the boundaries of space.

Embrace the future of window design with WOW, a premium, minimalist sliding system handcrafted with precision and passion, using cutting-edge materials that not only push the boundaries of innovation but also honor the environment. This exquisite creation is built to last, a testament to the perfect union of artistry and engineering, where every detail is a reflection of the pursuit of excellence.

WOW VISTA 42

Infinite limits.



WOW INVISI-TB 42

09

System



WOW VISTA 42

WOW – Infinite Limits

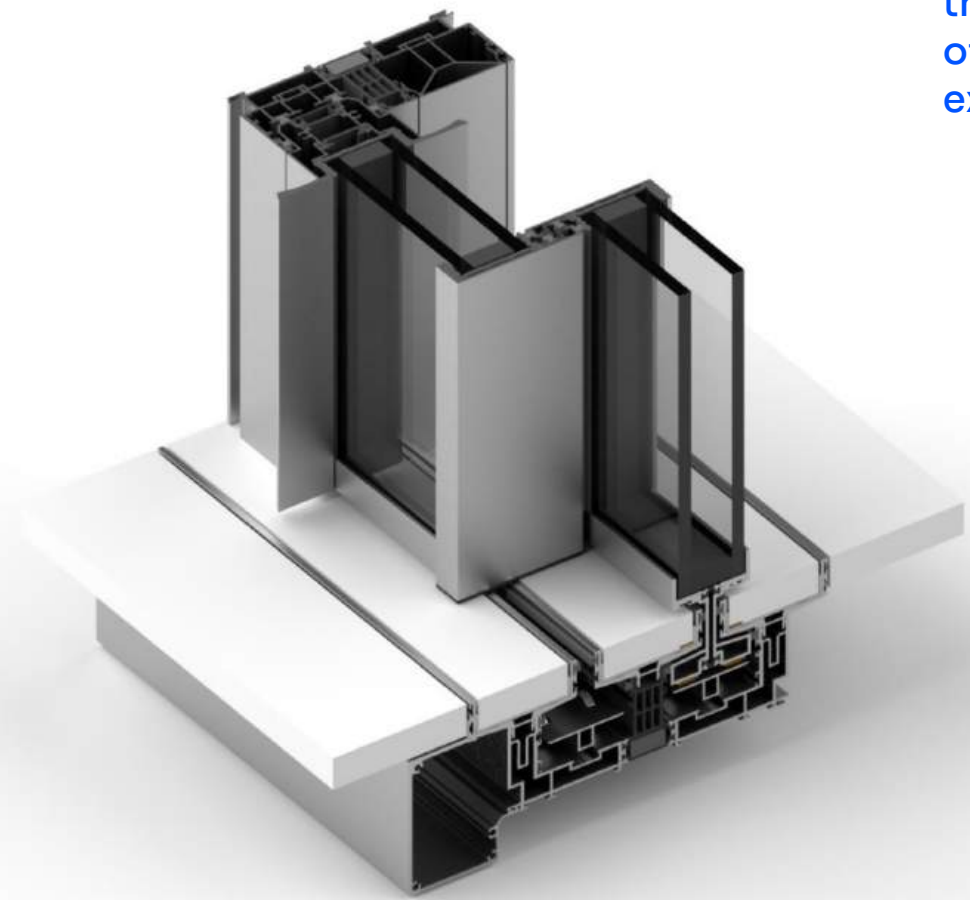
Introducing our cutting-edge self-supporting double-glass minimal system, featuring minimal aluminum frames, designed to provide exceptional performances and elevate your space to new heights, WOW offers you innovative solutions and a range of advantages that go beyond the ordinary.

Experience a sleek and modern aesthetic with our reduced interlock profiles of just 20mm, allowing for a more expansive and unobstructed view of the surroundings.

But it's not just about appearances our system excels in practicality too. Say goodbye to temperature fluctuations and noise disturbances, as WOW boasts exceptional thermal transmittance, airtight/watertight sealing, and sound insulation performances. Enjoy a comfortable and tranquil environment, shielded from the external elements and noise.

For effortless operation and convenience, WOW features a double ball bearing mechanism that ensures smooth and seamless sheet opening. Choose from a wide range of configurations to suit your needs: sliding options including multi-track, fixed panels, openable corner systems, sliding into the wall options, as well as tilt & turn and pivot opening choices.

Discover a world of possibilities with WOW system. It's not just a window; it's an expression of style, functionality, and innovation. Upgrade your space today and unlock the full potential of architectural excellence.



Infinite limits.

13

Products

WOW VISTA 42

A UNIQUE HORIZONTAL OPENING SOLUTION

WOW VISTA 42 introduces a unique horizontal opening solution.

Meticulously crafted from high-grade aluminum alloys and reinforced polymers, it boasts a sleek and natural finish.

For those seeking personalization, WOW offers an extensive selection of colors in both powder-coated and anodized finishes.

The bogie bearing system is engineered with a special chassis and sealed stainless steel bearings, purpose-built to endure the most demanding environments.

Whether in a fixed or sliding configuration, our vertical profile measures a mere 20 mm in width, adaptable to various glass surface areas.

WOW systems are equipped with multi-point locking systems for superior security.

Furthermore, enjoy the option of motorization for added convenience.

Thermal Transmittance

Uw = 1.25W/m².K
(Ug = 1.00W/m².K)

Sound Reduction

38dB

Air Permeability

Class 4

Burglar Resistance

RC2 / WK2

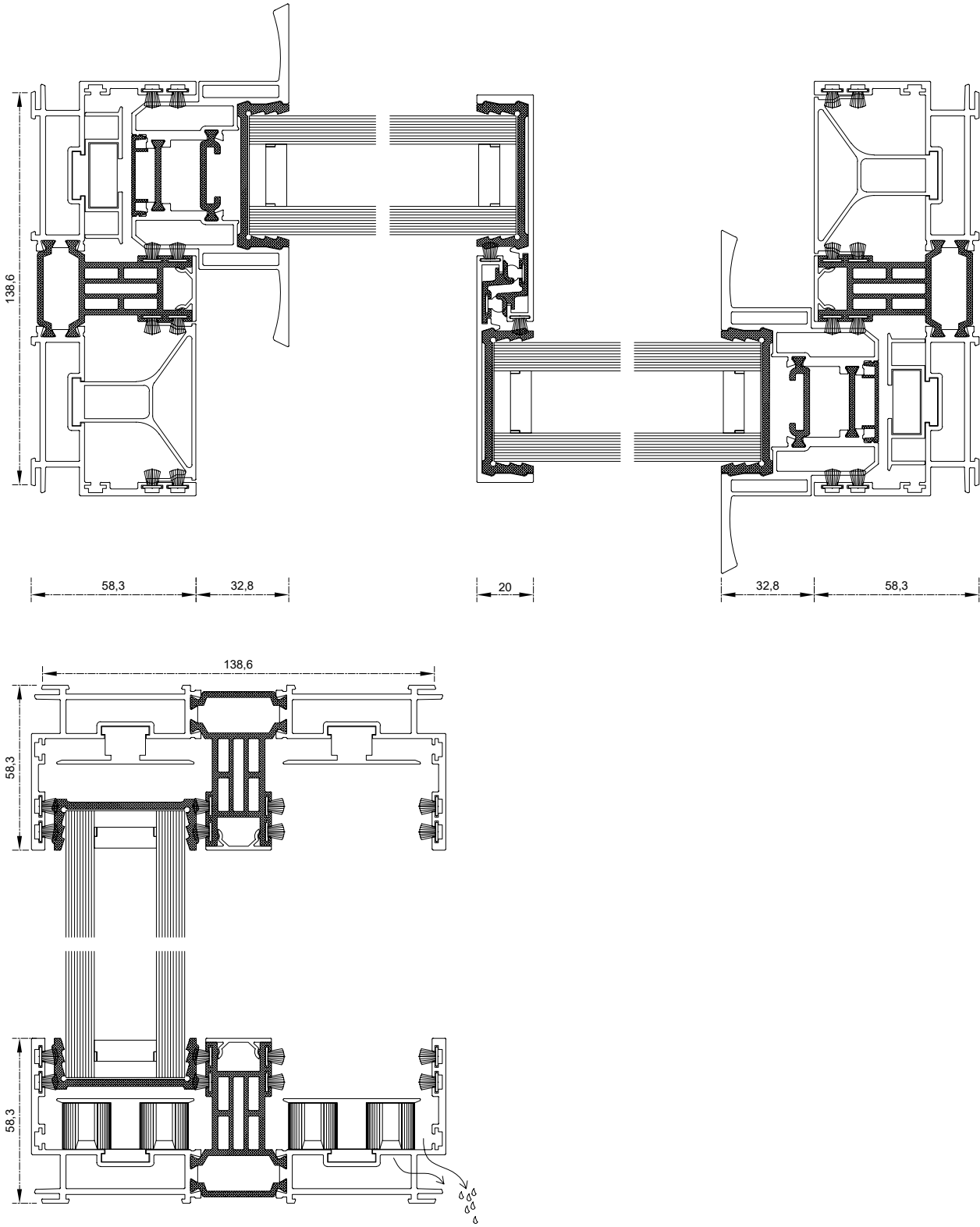
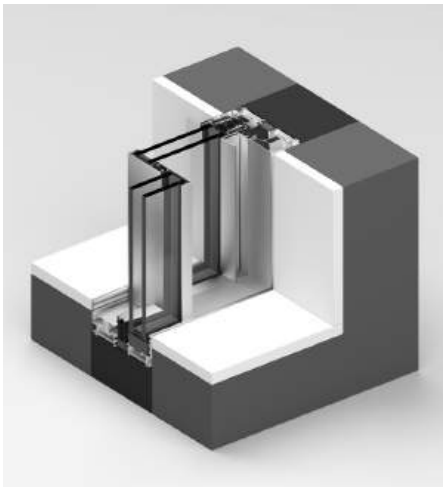
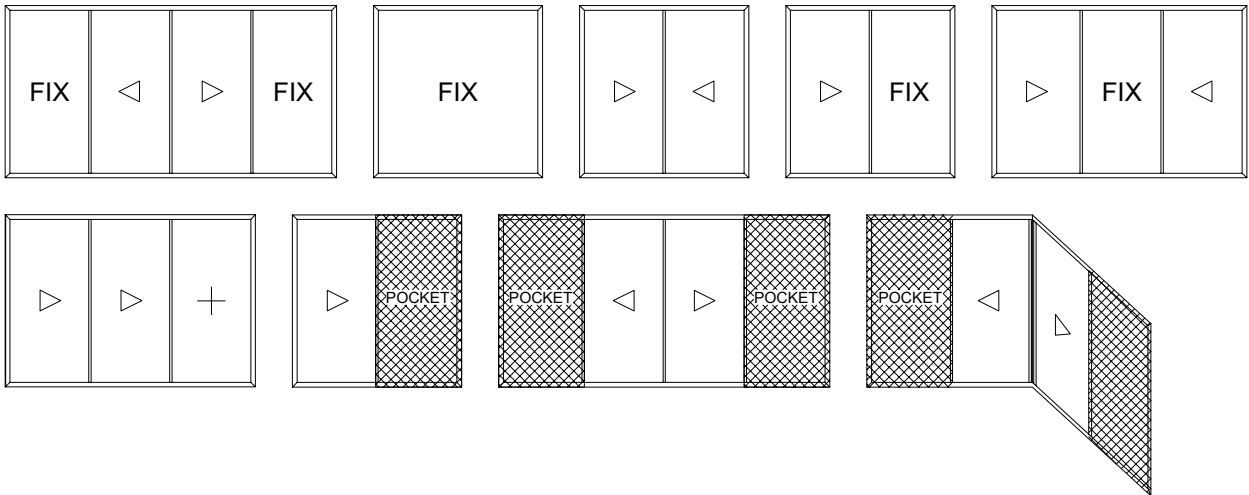
Wind Resistance

Class 5

Water Tightness

Class 9A

Opening Possibilities



Infinite limits.

WOW INVISI 42

INVISIBLE TRACK

FOR SEAMLESS DESIGN

WOW INVISI 42 offers a revolutionary concealed track system, delivering the same distinctive horizontal opening solution as WOW VISTA 42.

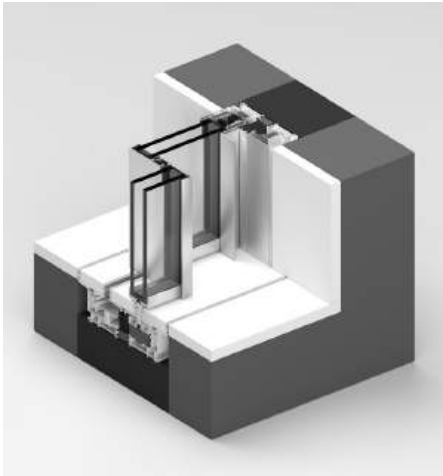
Expertly crafted from high-grade aluminum alloys and reinforced polymers, it maintains a sleek and natural finish.

For those seeking personalization, WOW provides an extensive array of color choices in both powder-coated and anodized finishes.

What sets INVISI 42 apart is its concealed track base profiles, ingeniously hidden beneath your floor material.

The bogie bearing system is engineered with a special chassis and sealed stainless steel bearings, purpose-built to endure the most demanding environments. Whether in a fixed or sliding configuration, our vertical profile measures a mere 20 mm in width, adaptable to various glass surface areas. WOW systems are equipped with multi-point locking systems for superior security.

Furthermore, enjoy the option of motorization for added convenience.



Thermal Transmittance

$U_w = 1.35 \text{ W/m}^2 \cdot \text{K}$
($U_g = 1.00 \text{ W/m}^2 \cdot \text{K}$)

Sound Reduction

38dB

Air Permeability

Class 4

Burglar Resistance

RC2 / WK2

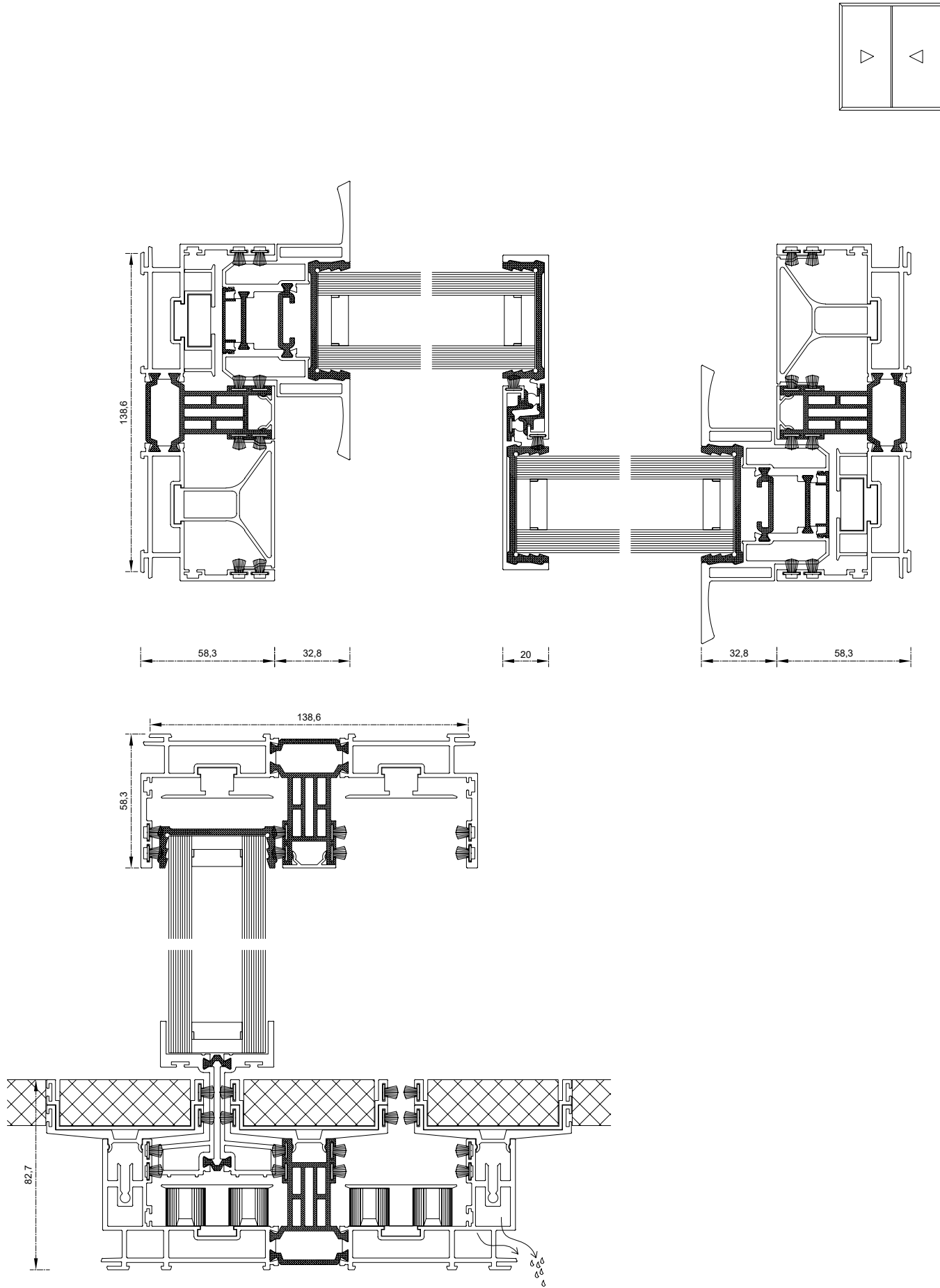
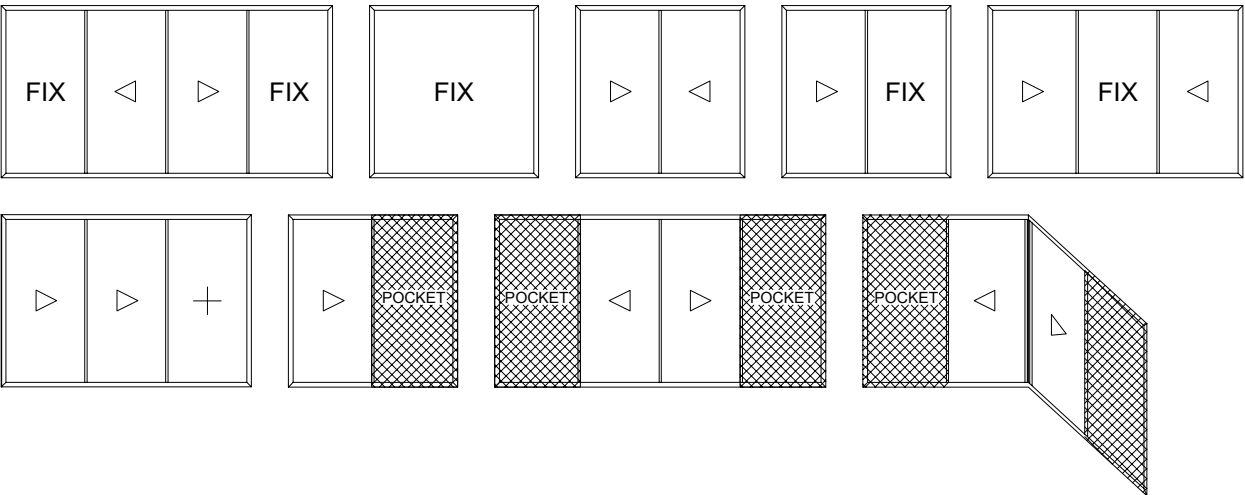
Wind Resistance

Class 5

Water Tightness

Class 9A

Opening Possibilities



Infinite limits.

WOW ELEVA 42

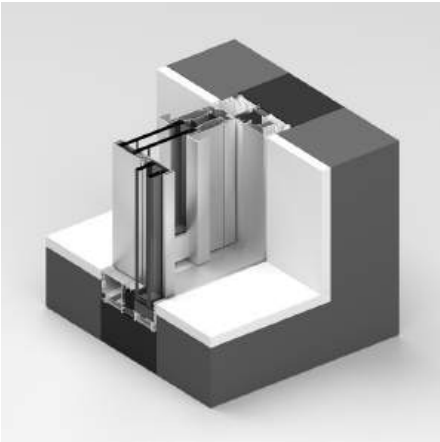
THE ELEGANCE OF A PIVOT OPENING

Experience the extraordinary with our WOW ELEVA 42.

These pivot doors redefine grandeur, allowing you to create exceptionally tall doorways that make a stunning architectural statement.

Crafted with precision and engineering excellence, our WOW ELEVA 42 are remarkably lightweight and effortless to operate. The innovative design ensures that even the tallest doors can be opened with ease, offering a seamless transition between spaces.

These doors are the embodiment of both luxury and convenience, making a bold impression while providing effortless functionality. Elevate your space with our Pivot Door Collection and enjoy the pinnacle of door design.



Thermal Transmittance

$U_w = 1.50 \text{ W/m}^2\cdot\text{K}$
($U_g = 1.00 \text{ W/m}^2\cdot\text{K}$)

Burglar Resistance

RC2 / WK2

Sound Reduction

–

Wind Resistance

Class 5

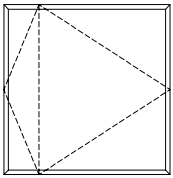
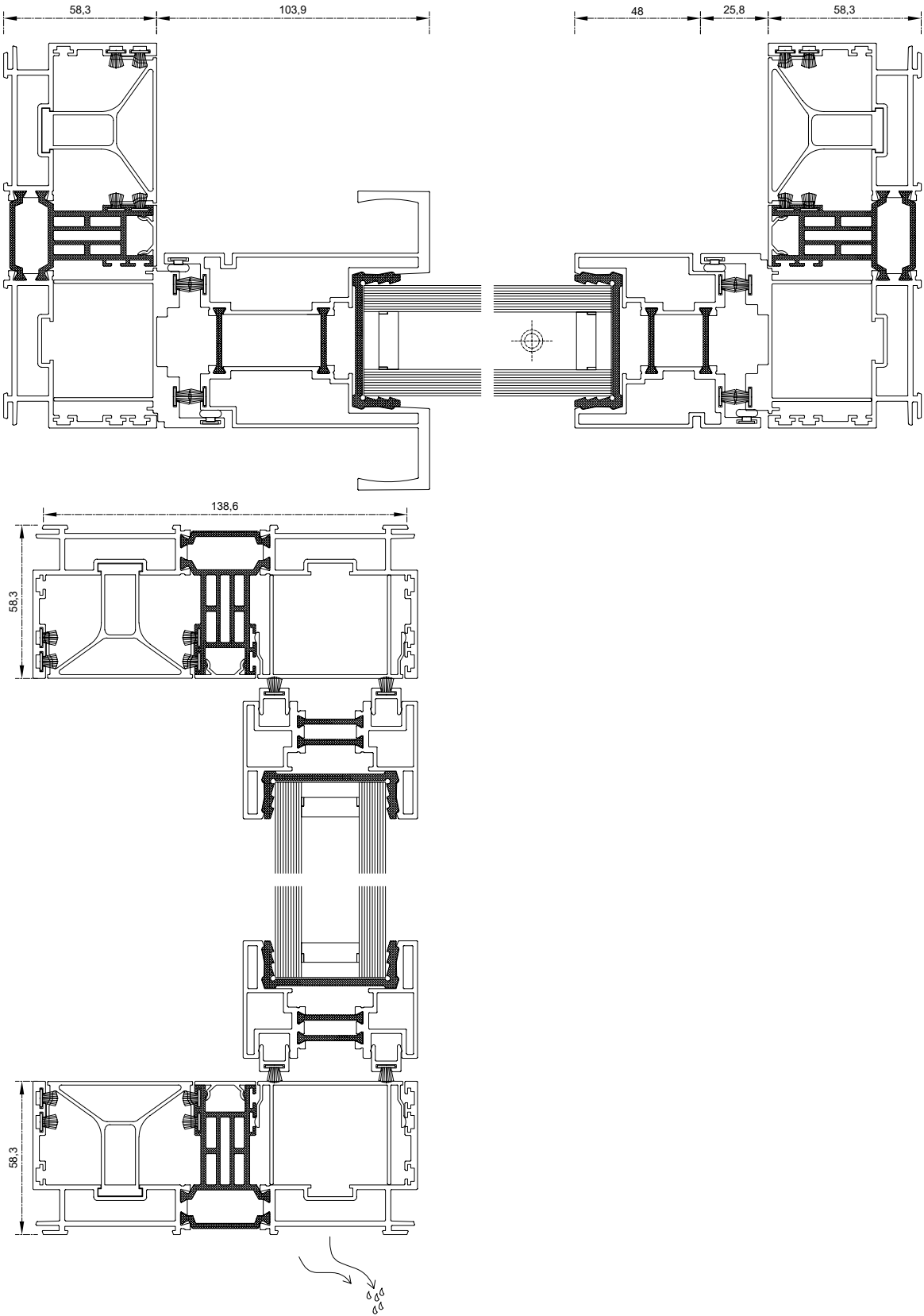
Air Permeability

–

Water Tightness

–

Opening Possibilities



Infinite limits.

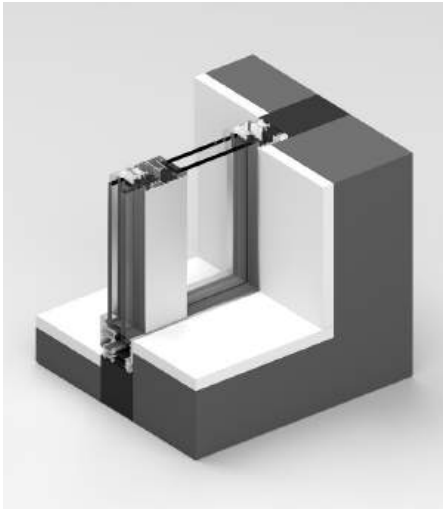
WOW FLEXI 42

VERSATILITY IN A TILT & TURN SOLUTION

Introducing WOW FLEXI 42, where versatility meets uniformity in window and door design. With FLEXI 42, we've seamlessly integrated the same profile shape and dimensions as our other premium systems, ensuring a cohesive and harmonious look throughout your living space.

While it offers the flexibility of tilt and turn functionality, what sets WOW FLEXI 42 apart is its commitment to design consistency. Whether you choose sliding, pivot, or tilt and turn systems, you'll enjoy the same sleek and contemporary profile geometry, creating a unified aesthetic in your home.

WOW FLEXI 42 brings together style and functionality in perfect harmony, offering you the flexibility you desire while maintaining the architectural integrity of your space.



Thermal Transmittance

Uw = 1.40W/m².K
(Ug = 1.00W/m².K)

Sound Reduction

42dB

Air Permeability

Class 4

Burglar Resistance

RC2 / WK2

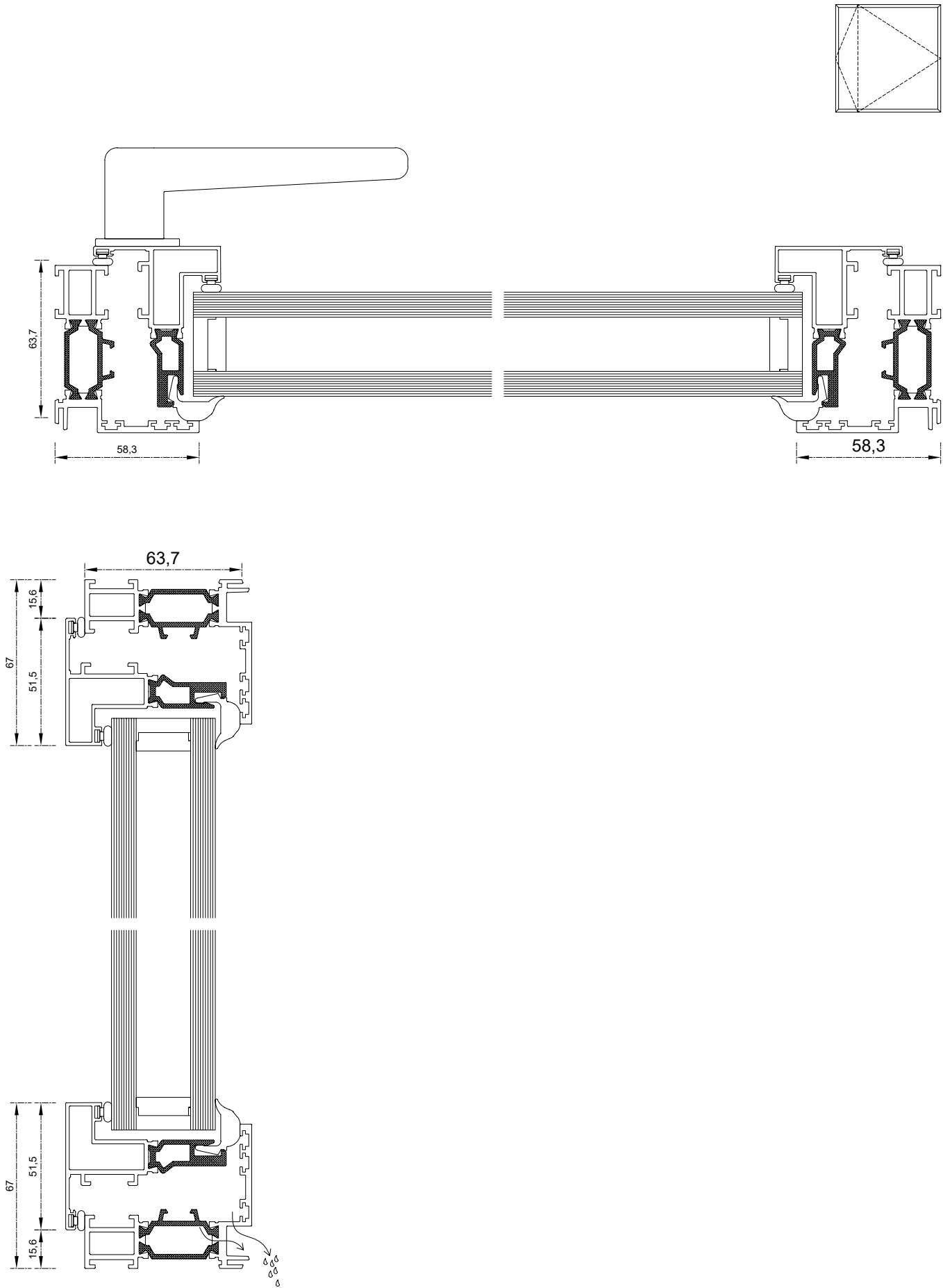
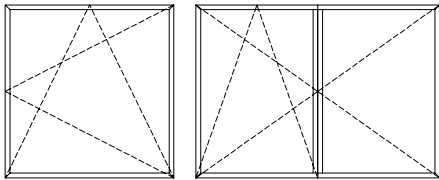
Wind Resistance

Class 5

Water Tightness

Class 9A

Opening Possibilities



Infinite limits.

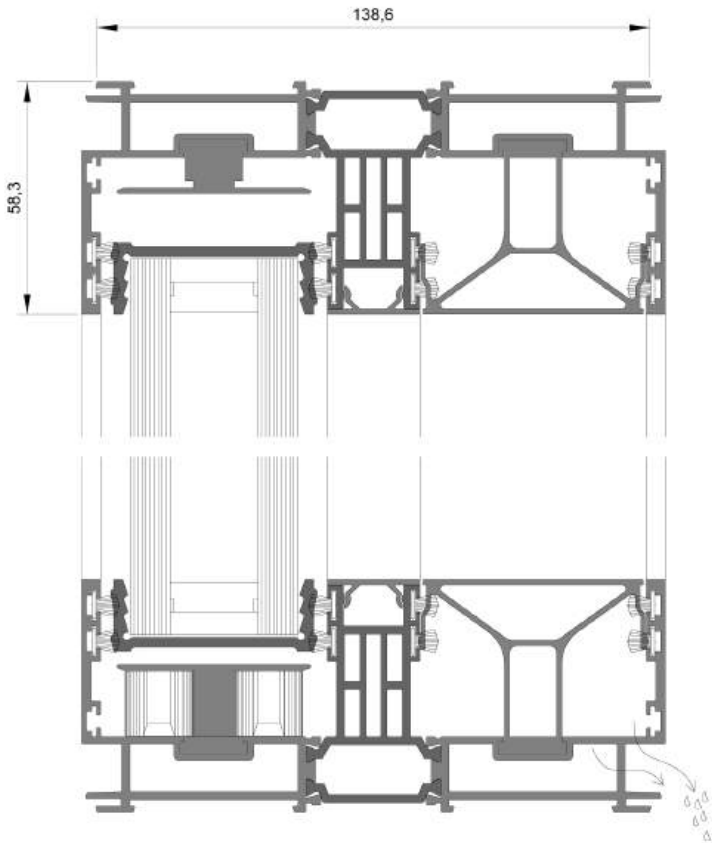
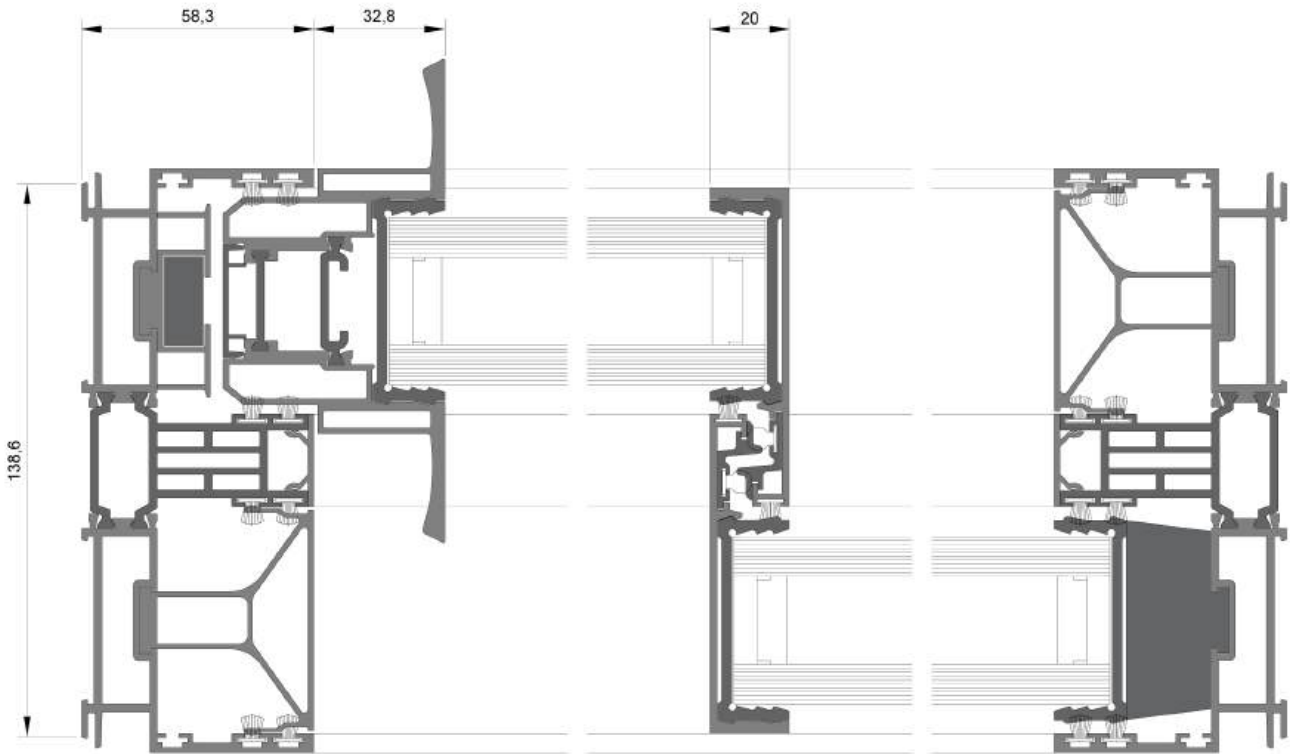
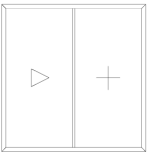


WOW FLEXI 42

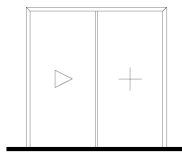
23

Applications

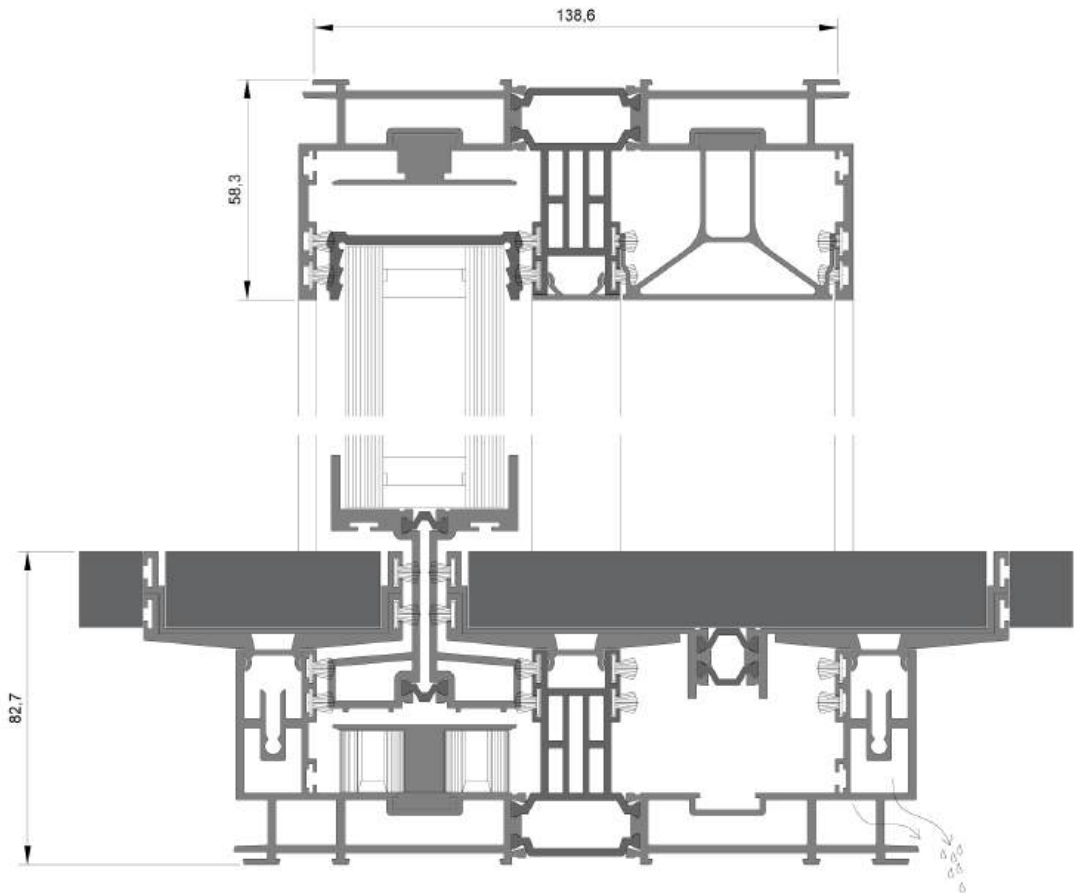
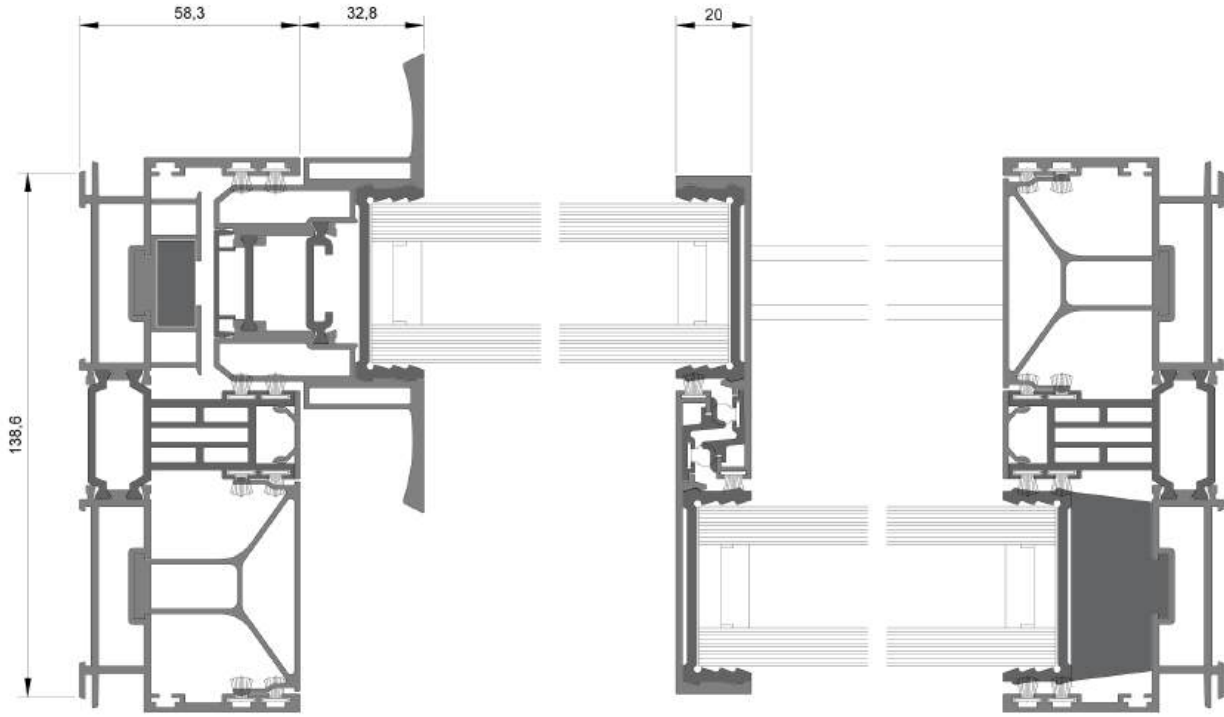
WOW VISTA 42 - DOUBLE-TRACK
SLIDING + FIX



WOW INVISI 42 - DOUBLE-TRACK
SLIDING + FIX

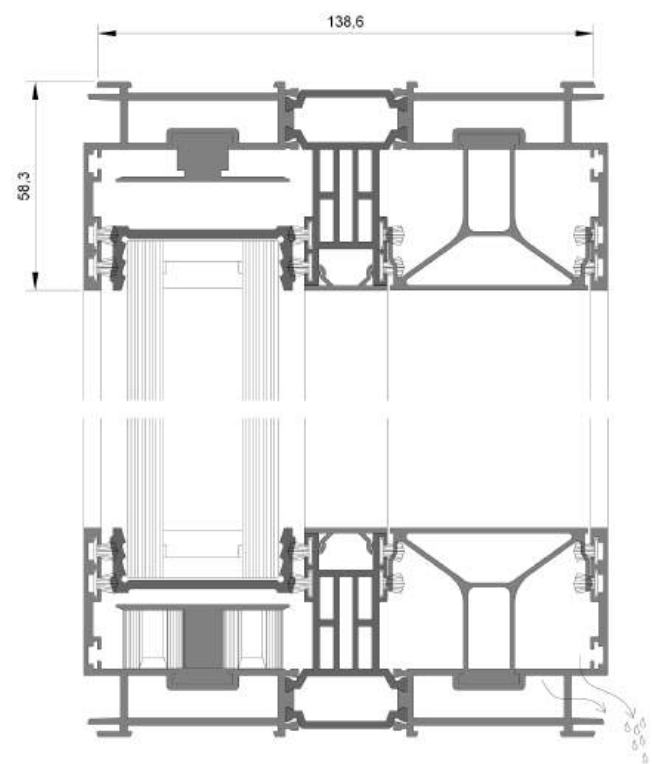
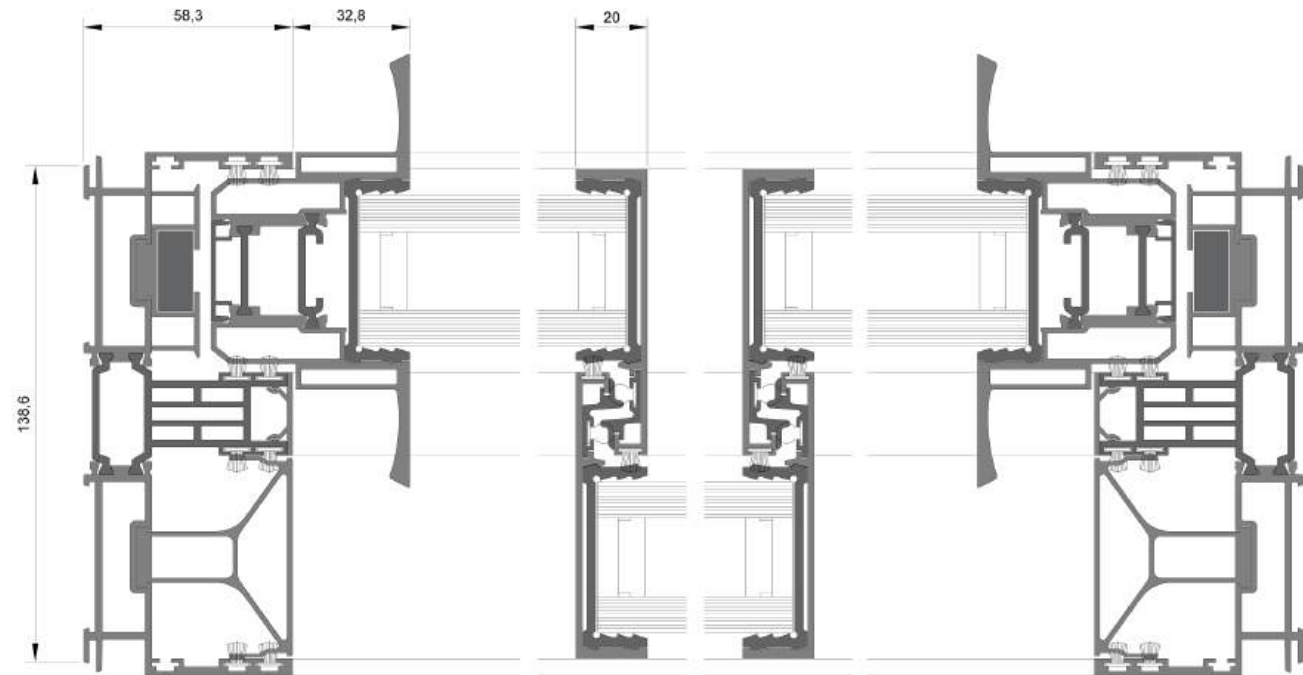
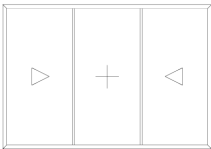


INVISIBLE TRACK

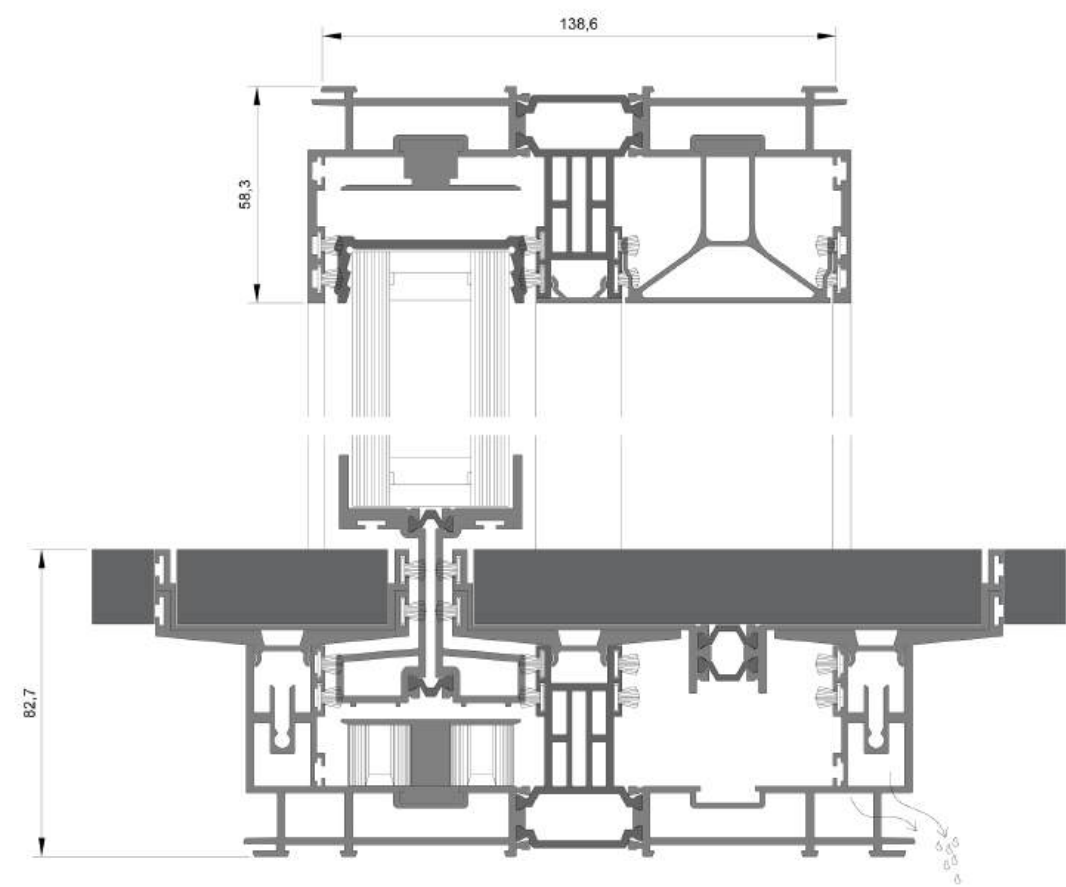
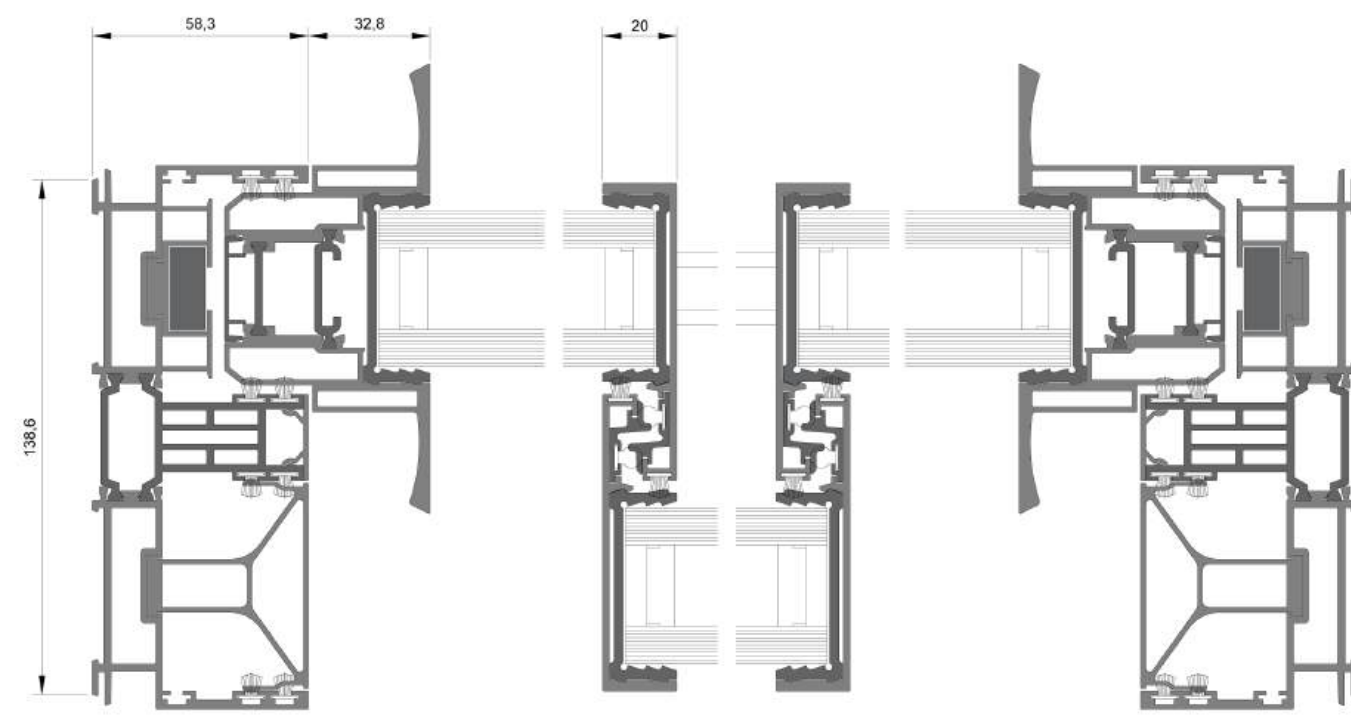
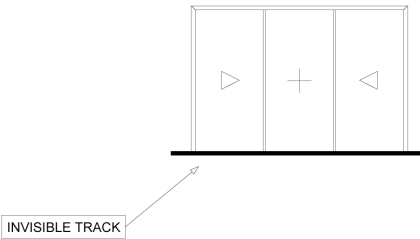


Infinite limits.

WOW VISTA 42 - DOUBLE-TRACK
SLIDING + FIX + SLIDING

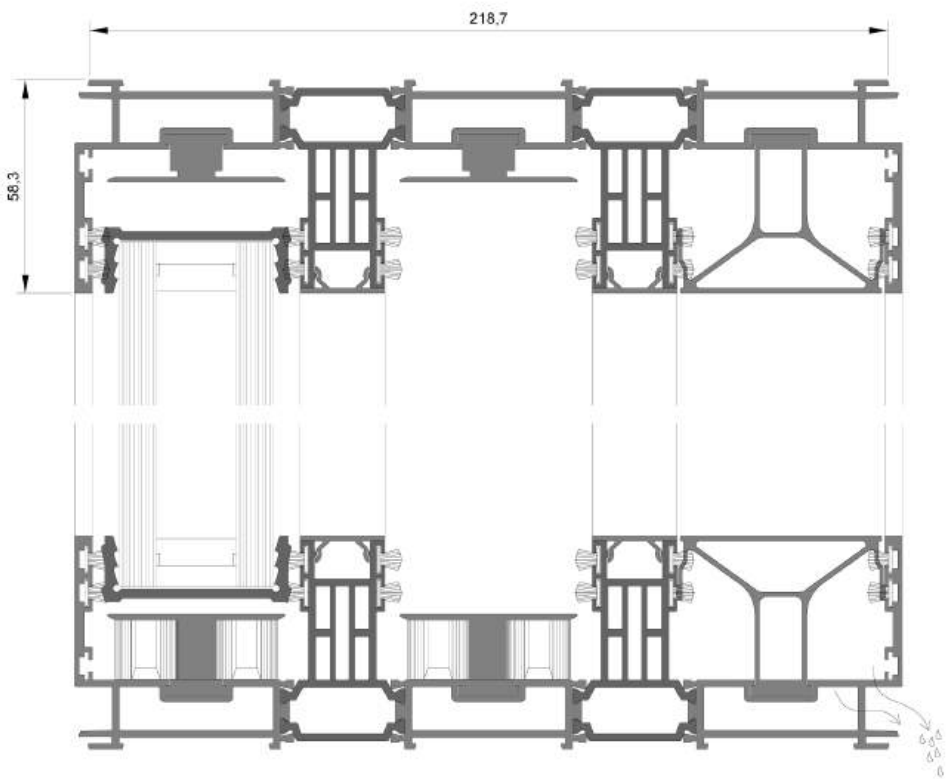
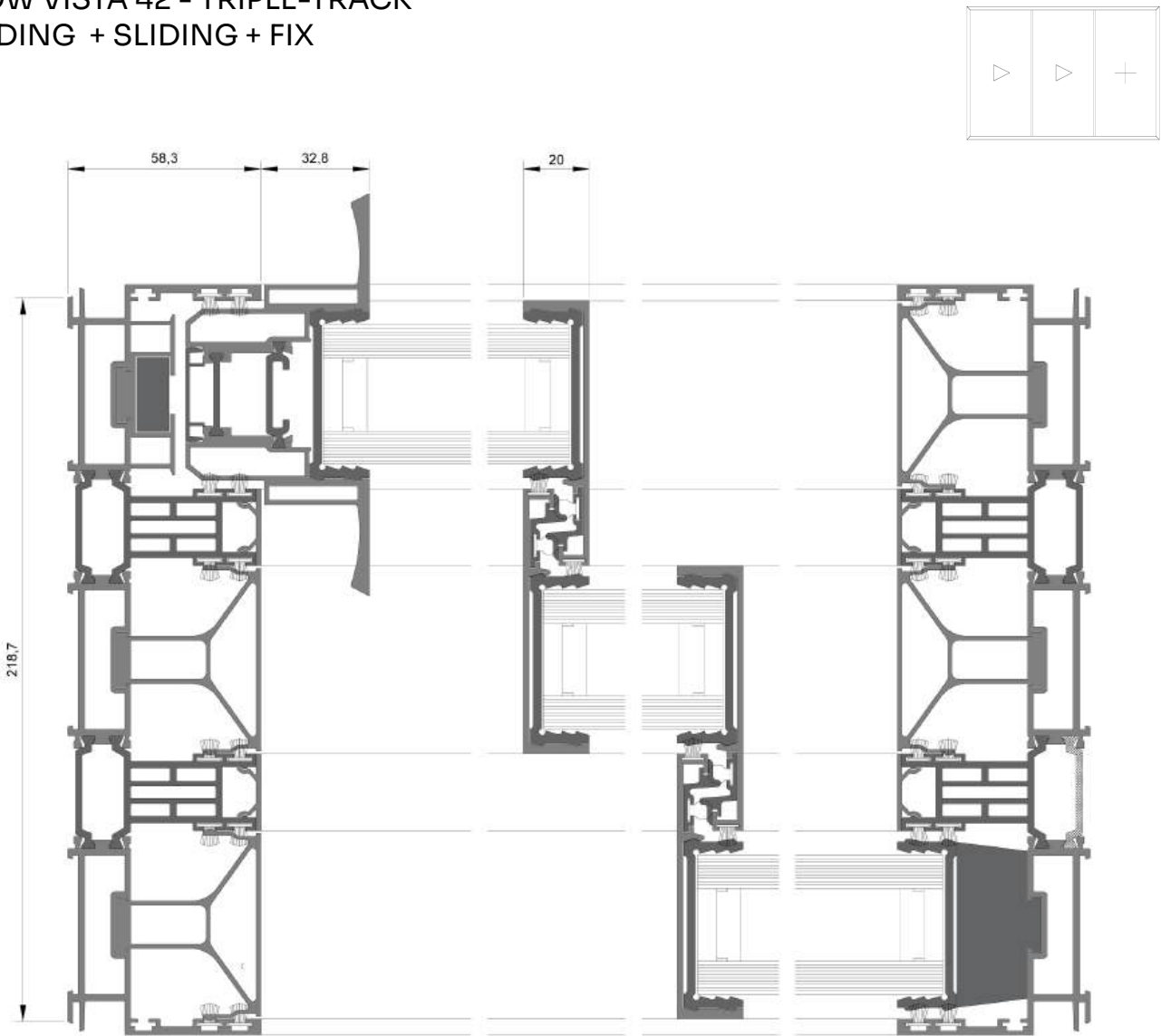


WOW INVISI 42 - DOUBLE-TRACK
SLIDING + FIX + SLIDING

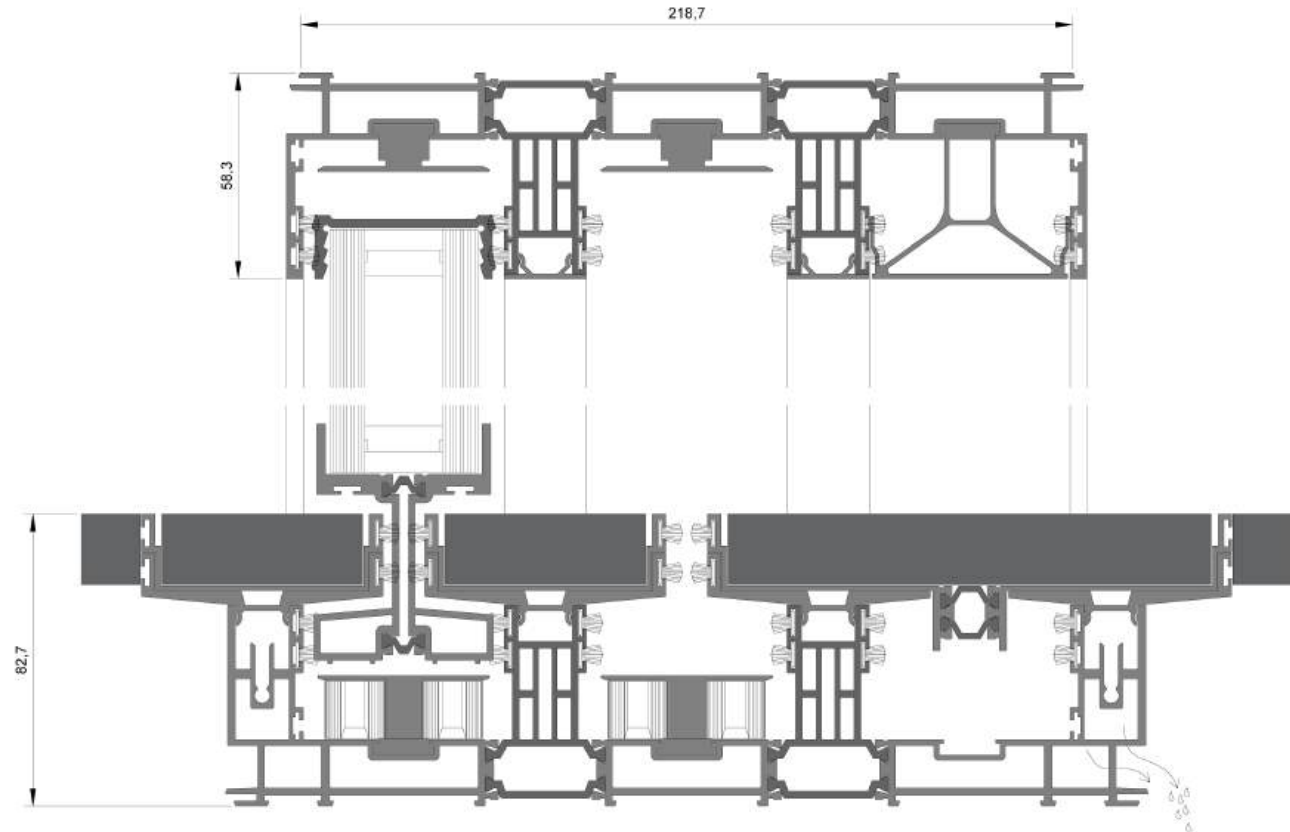
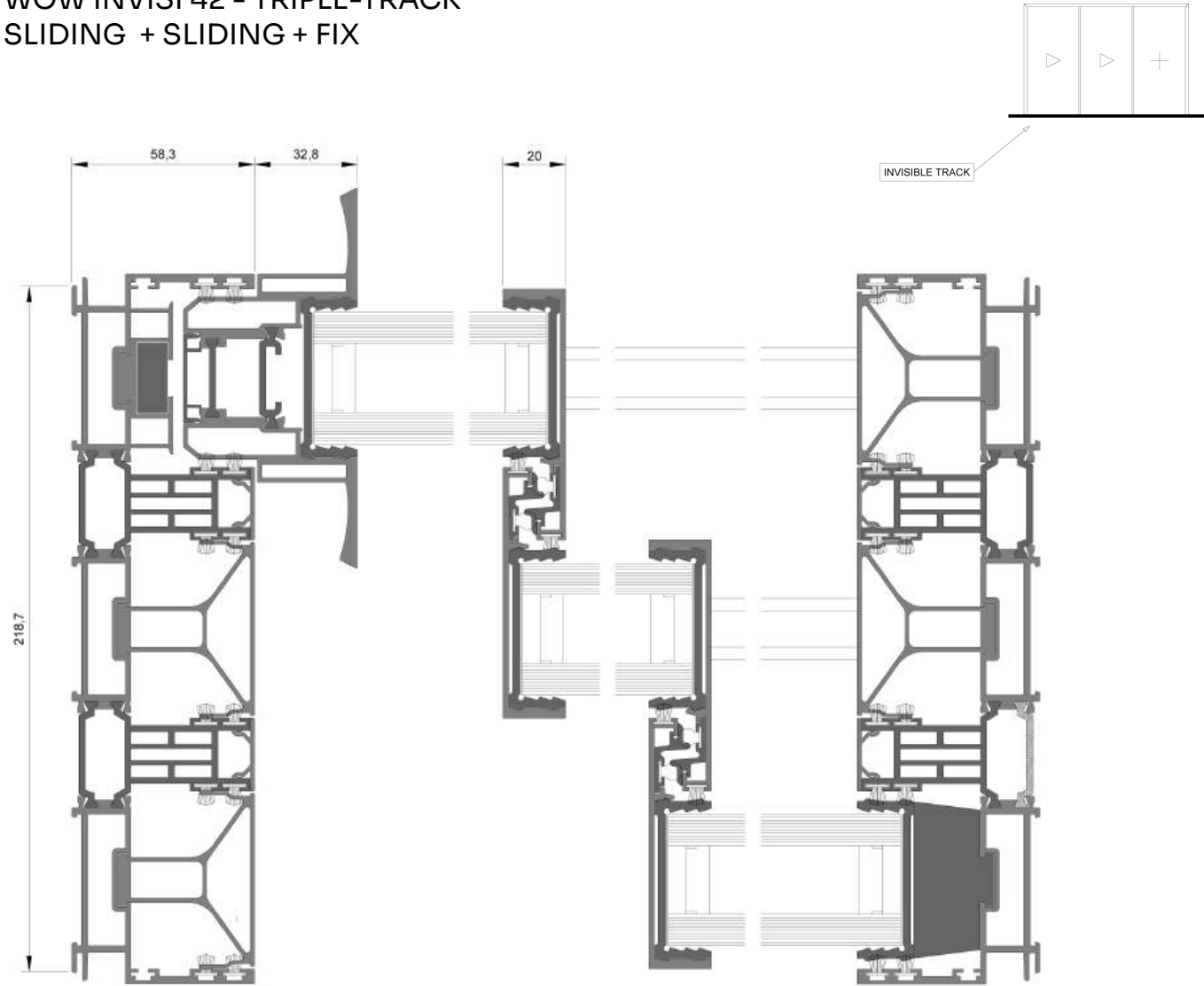


Infinite limits.

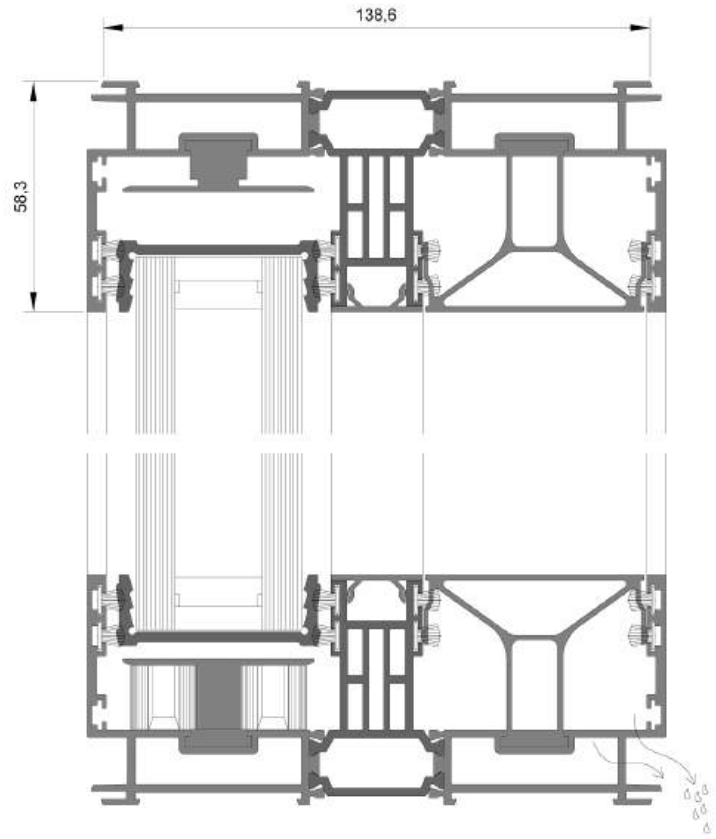
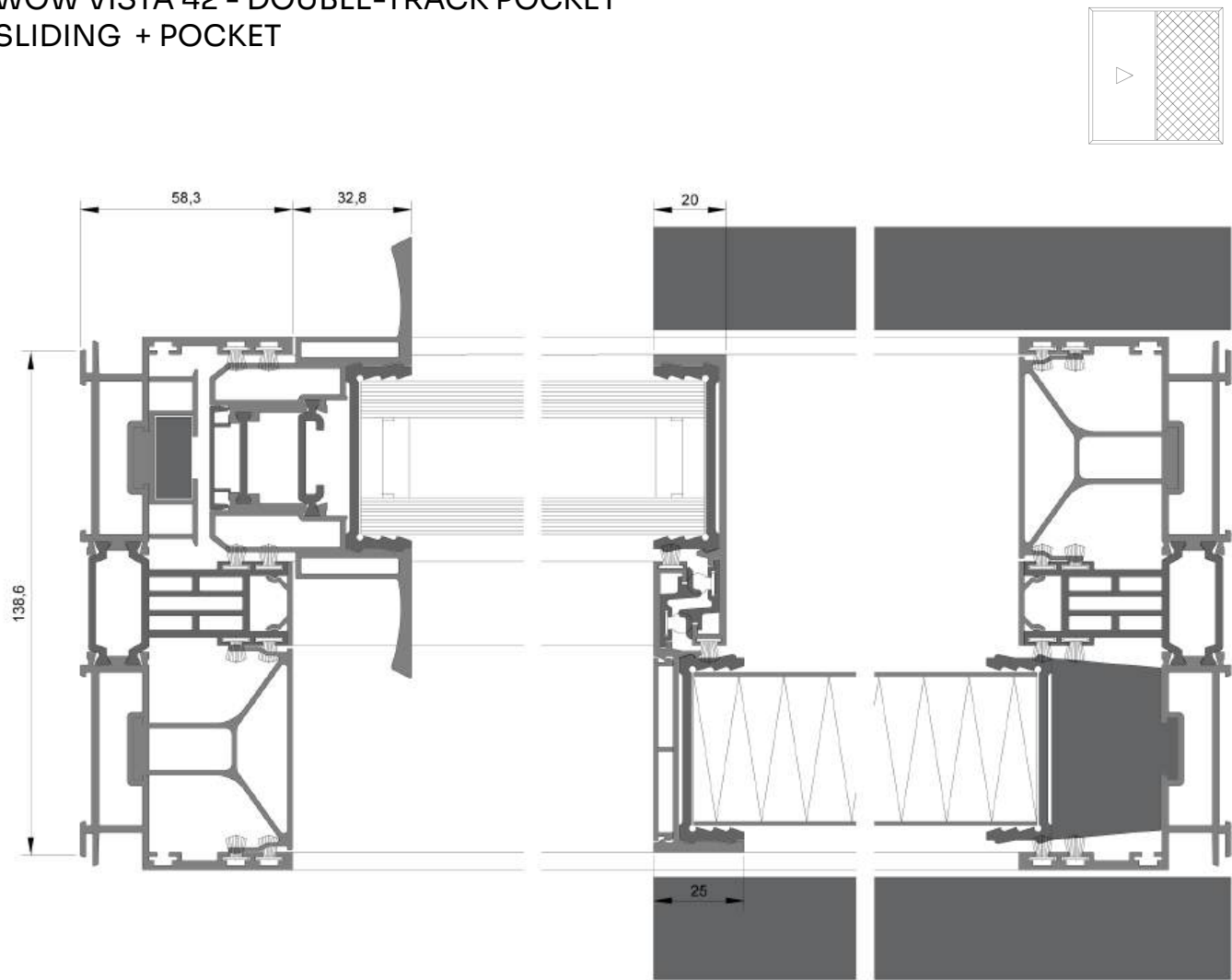
WOW VISTA 42 - TRIPLE-TRACK
SLIDING + SLIDING + FIX



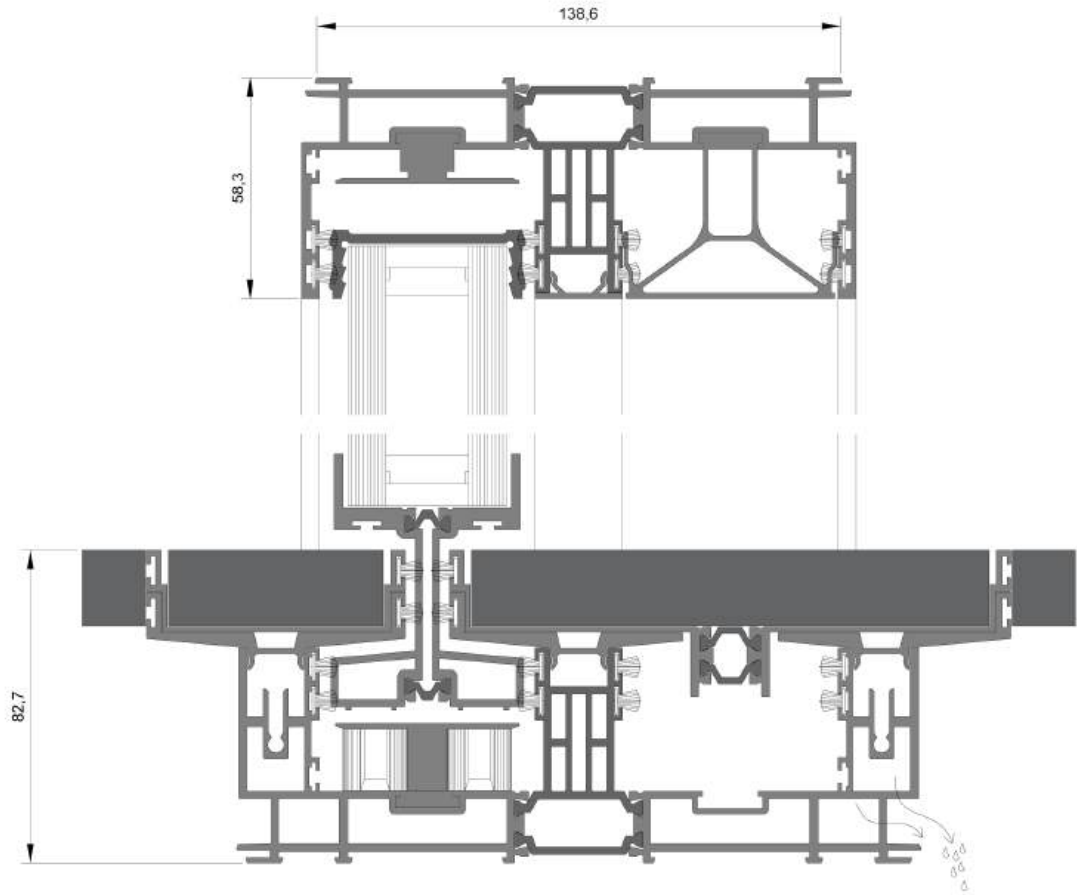
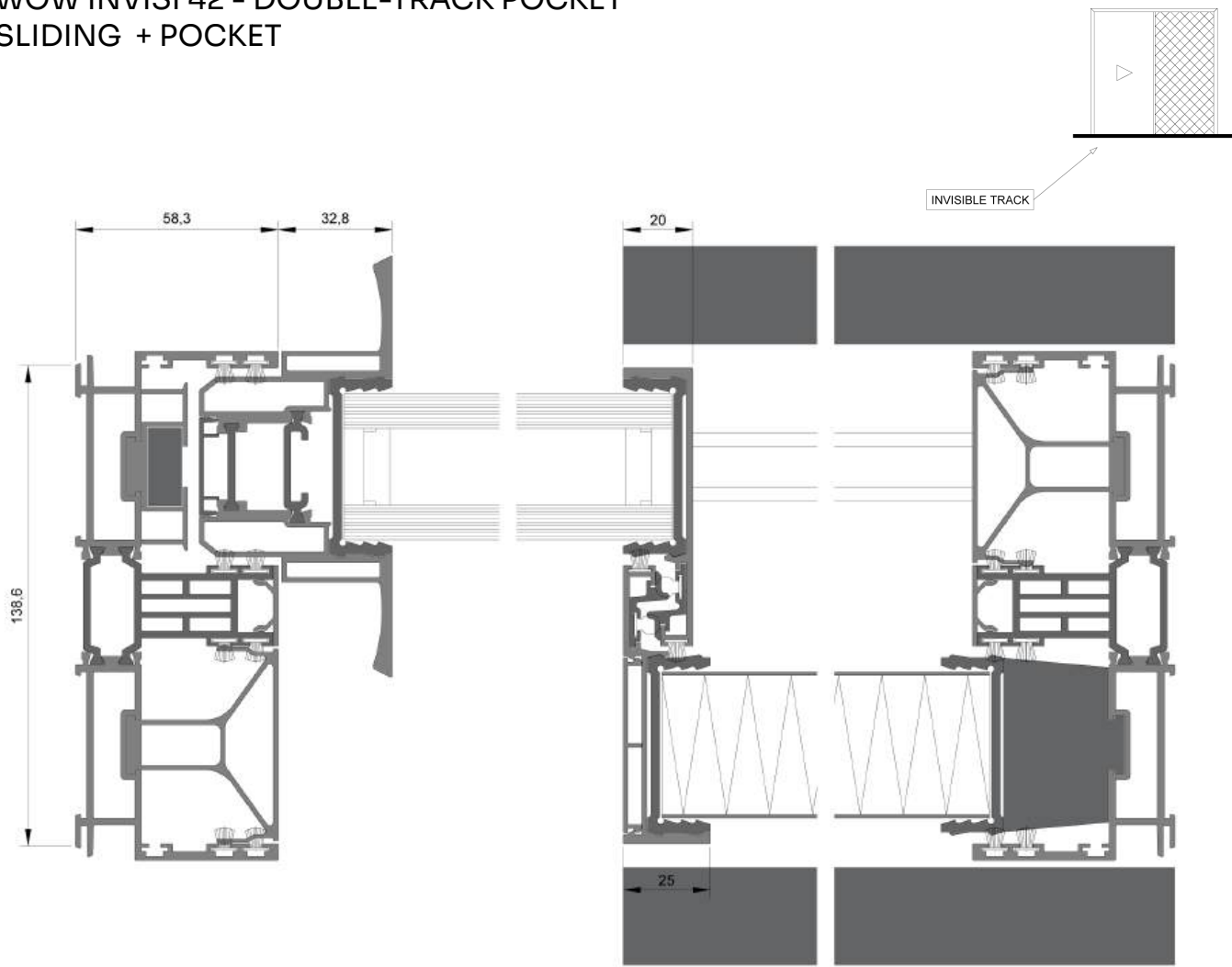
WOW INVISI 42 - TRIPLE-TRACK
SLIDING + SLIDING + FIX



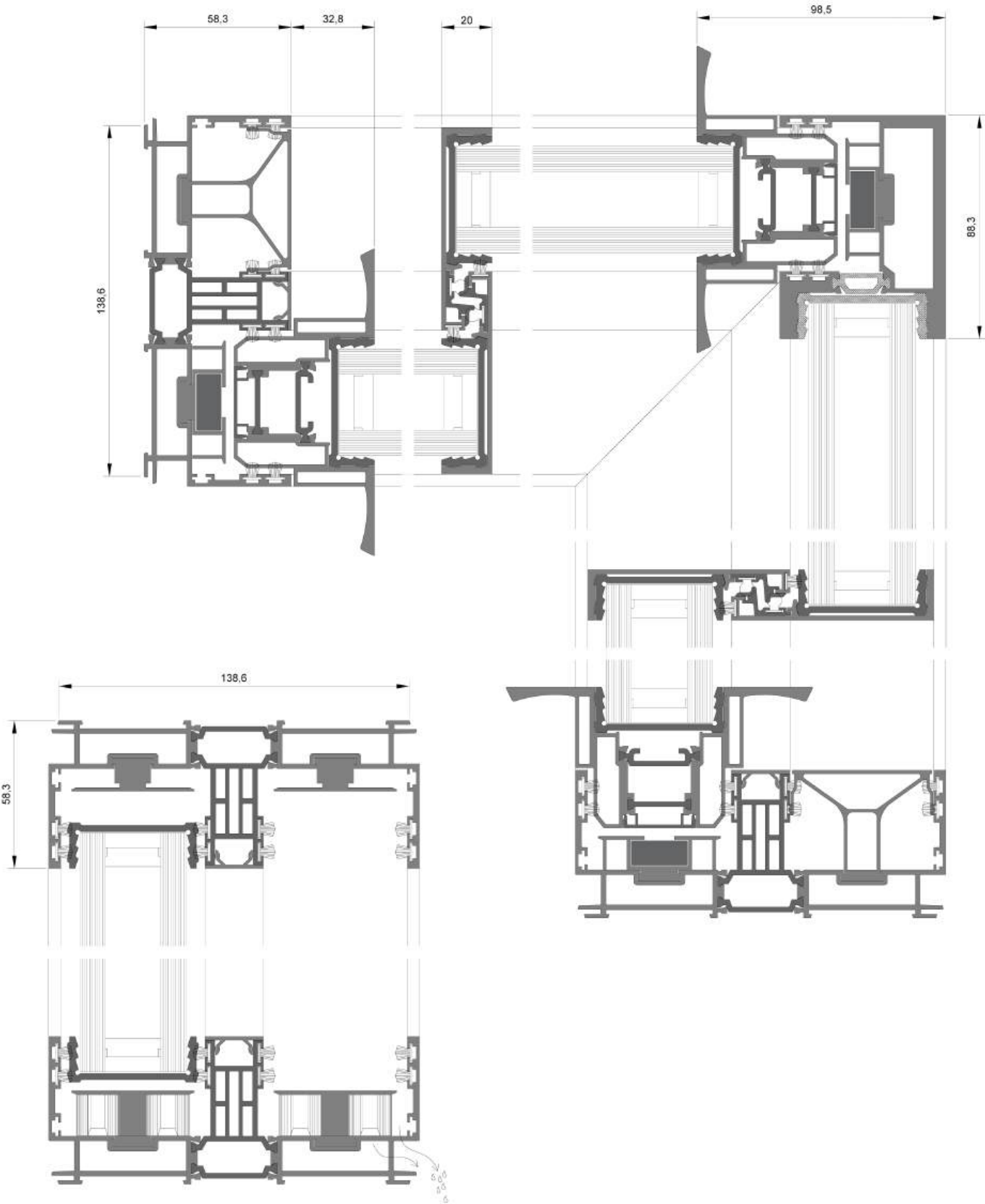
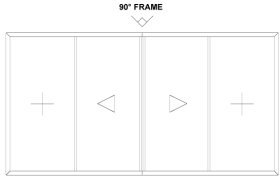
WOW VISTA 42 - DOUBLE-TRACK POCKET
SLIDING + POCKET



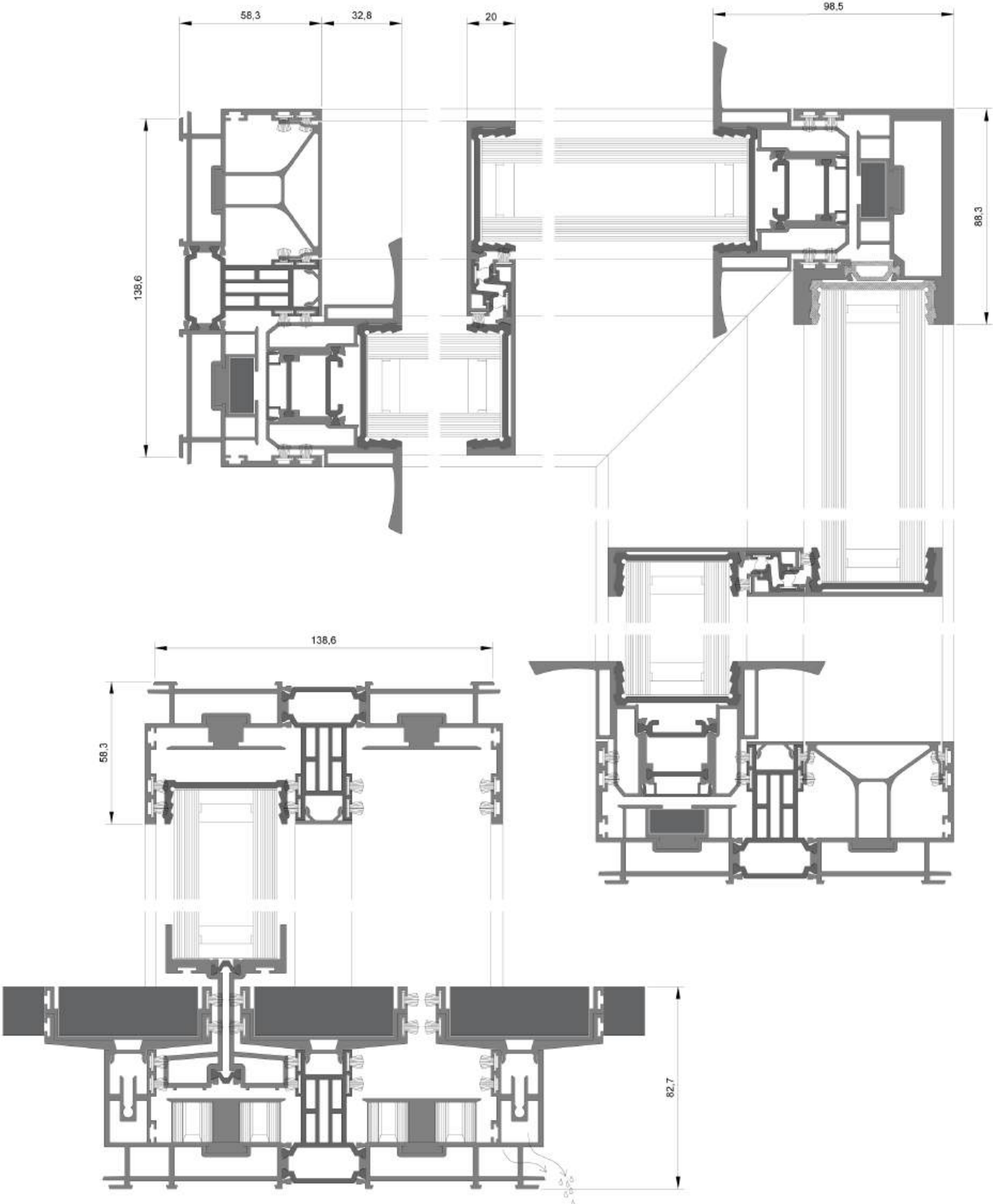
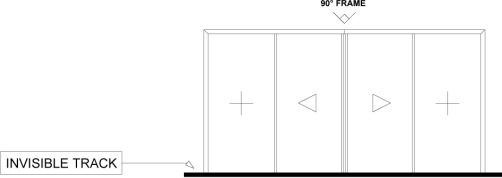
WOW INVISI 42 - DOUBLE-TRACK POCKET
SLIDING + POCKET



WOW VISTA 42 - DOUBLE-TRACK CORNER
SLIDING + SLIDING + CORNER + SLIDING + SLIDING

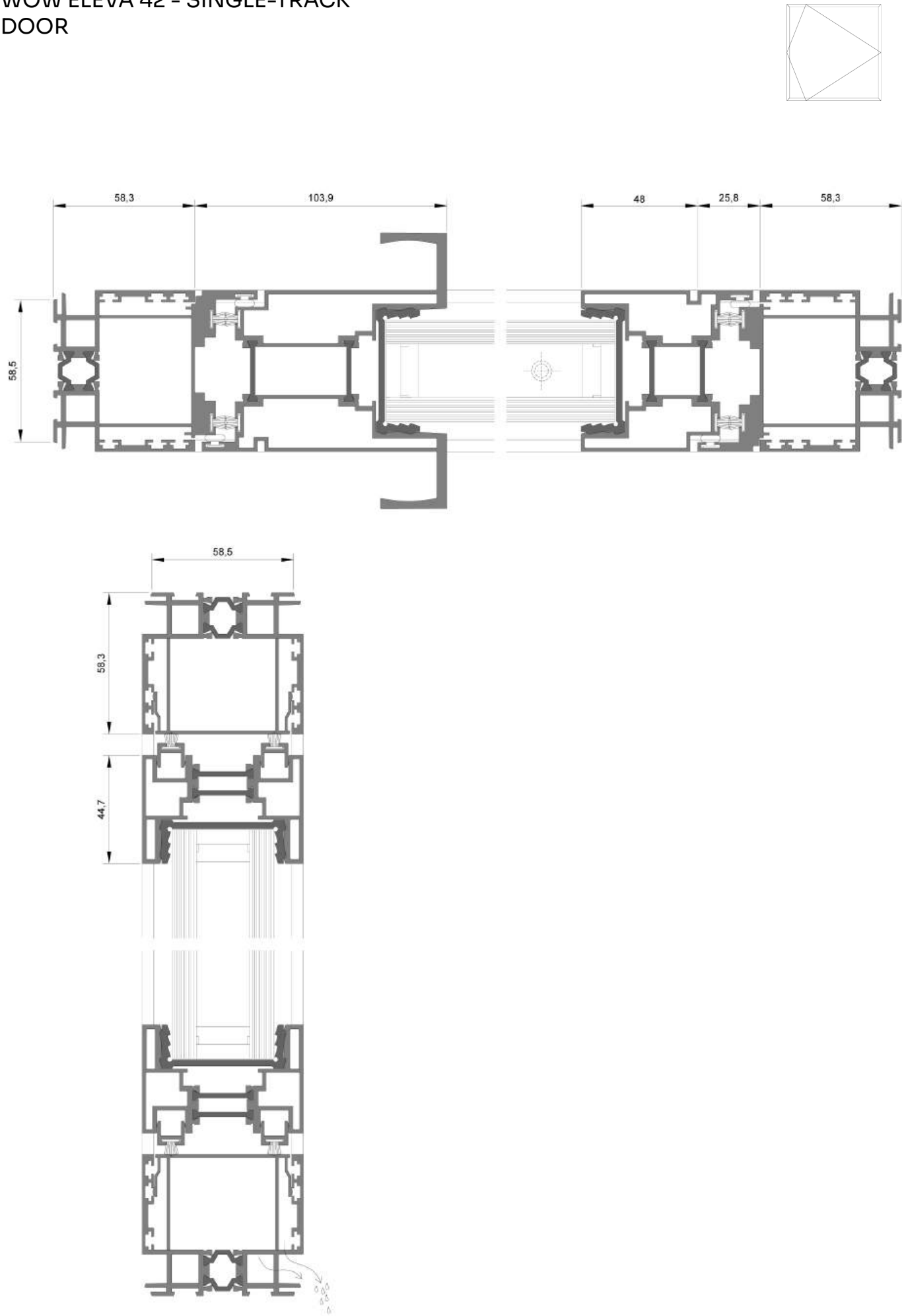


WOW INVISI 42 - DOUBLE-TRACK CORNER
SLIDING + SLIDING + CORNER + SLIDING + SLIDING

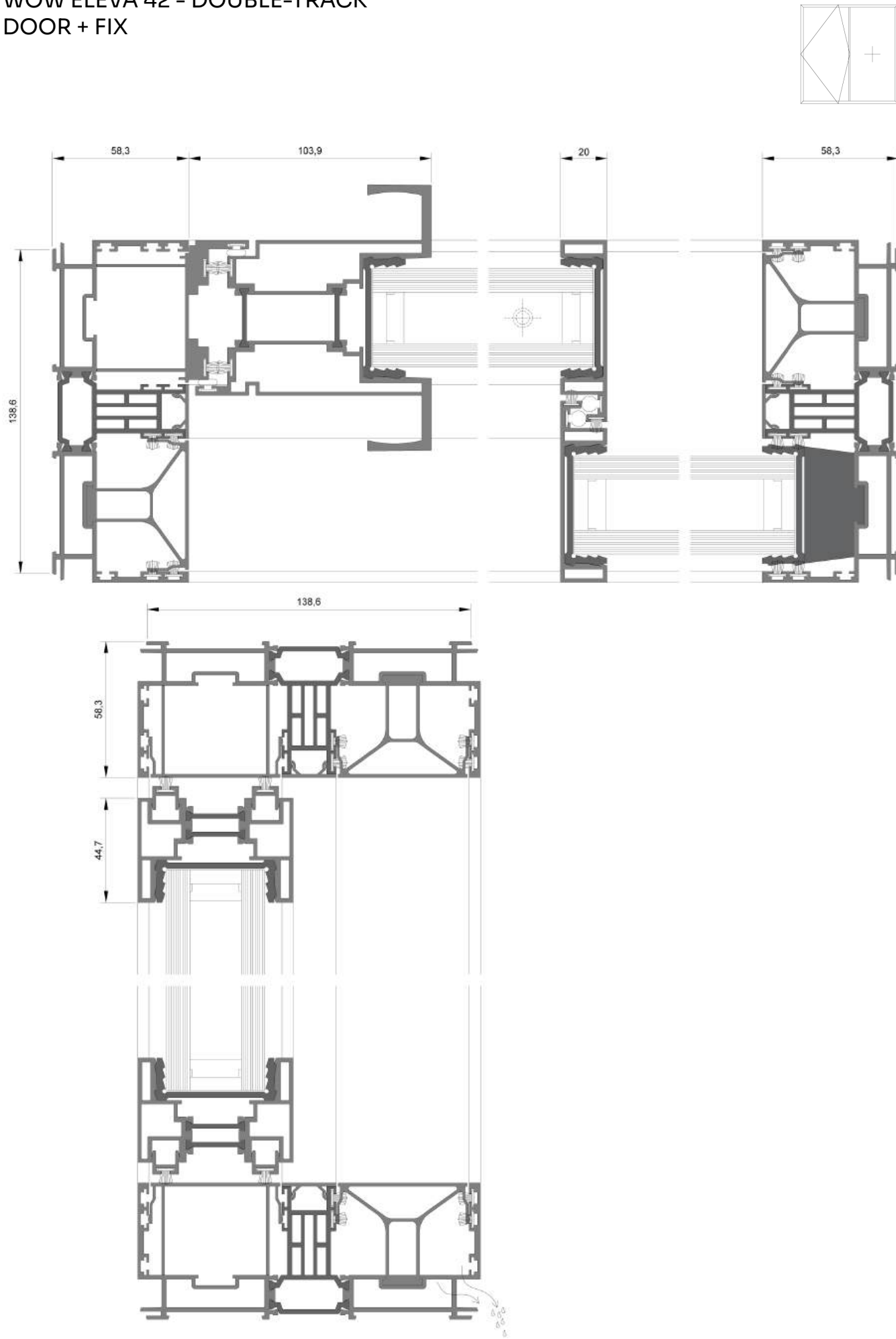


Infinite limits.

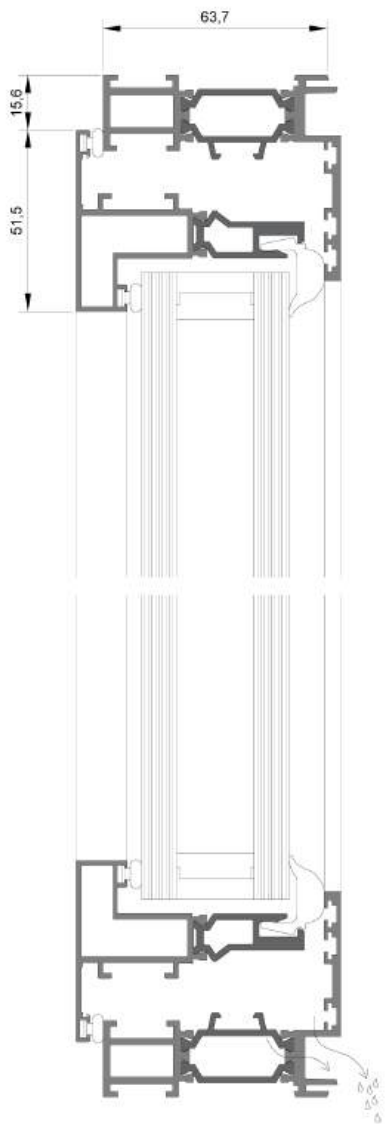
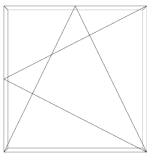
WOW ELEVA 42 - SINGLE-TRACK
DOOR



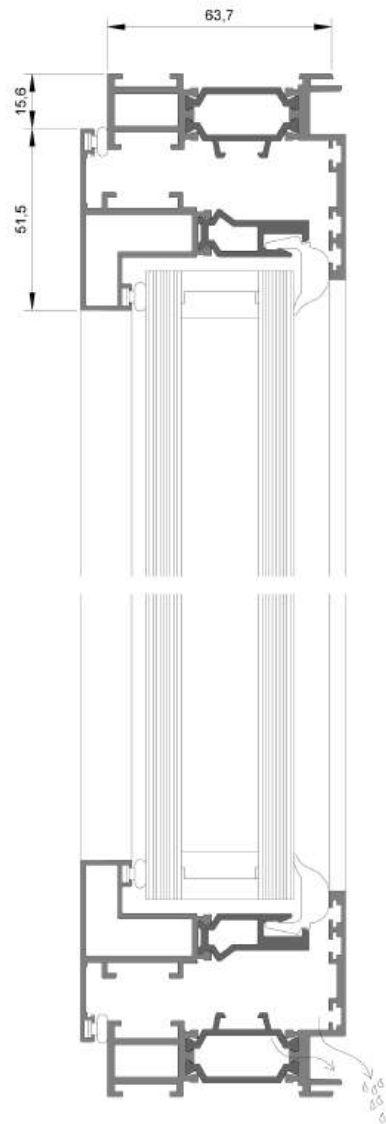
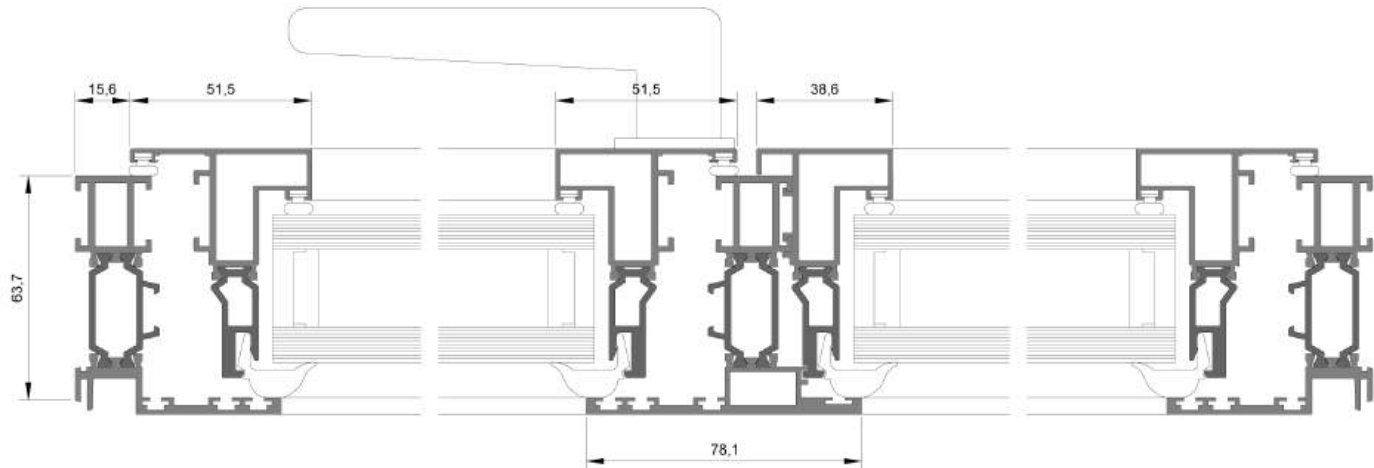
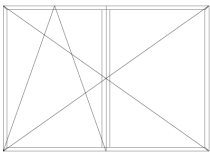
WOW ELEVA 42 - DOUBLE-TRACK
DOOR + FIX



WOW FLEXI 42 - SINGLE-TRACK
T&T + T



WOW FLEXI 42 - SINGLE-TRACK
T&T + T



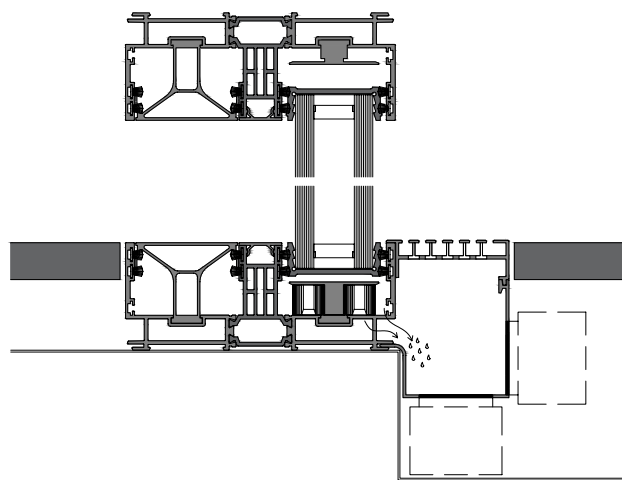
39

Features

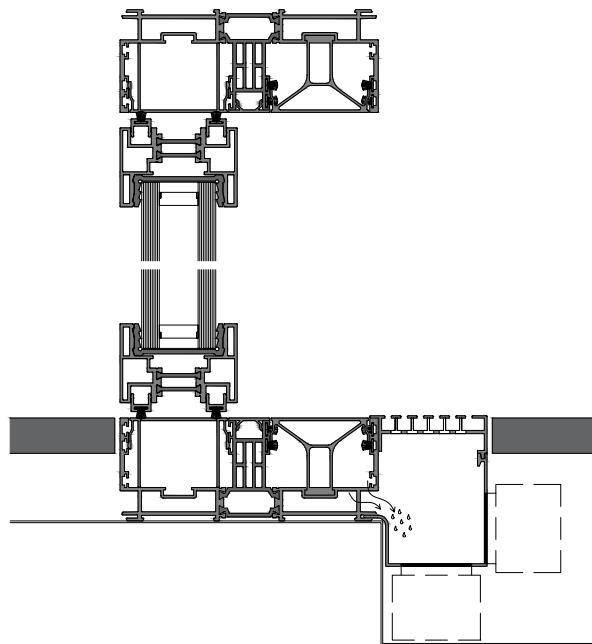
INTEGRATED DRAINAGE SYSTEM

Explore our innovative linear drainage system, expertly embedded within the sliding door framework for a streamlined look. Featuring a discrete drainage grate, this system maintains a clean, modern aesthetic that harmonizes with any design. It effectively channels water away from the floor level through concealed drains within the window frame, directing it into a robust channel below.

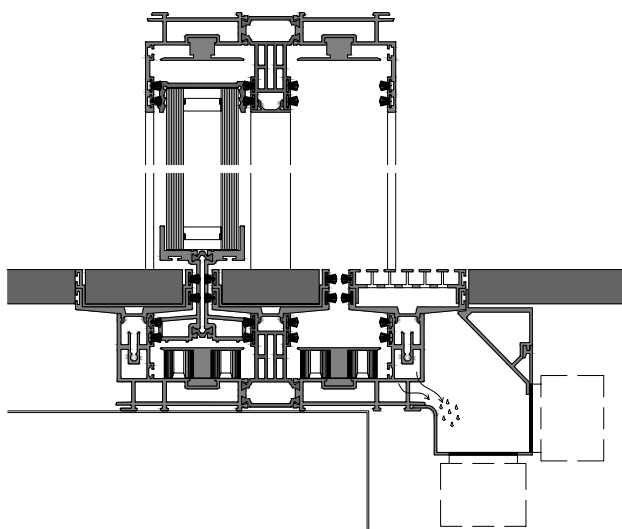
WOW.DRAINAGE VISTA 42



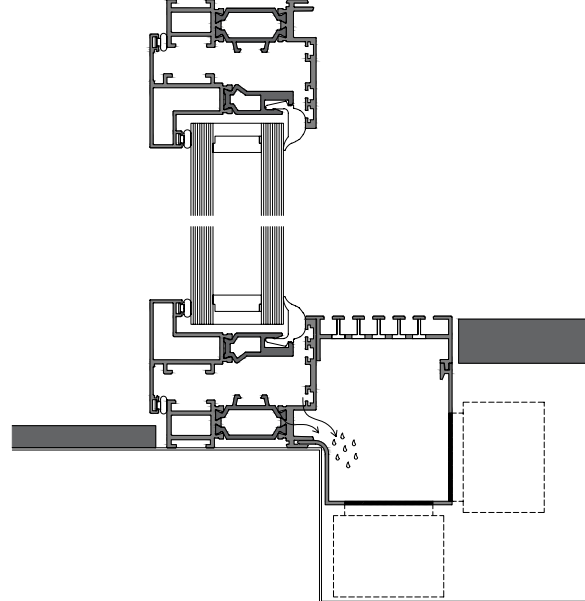
WOW.DRAINAGE ELEVA 42



WOW.DRAINAGE INVISI 42



WOW.DRAINAGE FLEXI 42



MOTORIZATION

Introducing the WOW.DRIVE Series: Innovative Motor Addon for Automatic Opening

Our WOW.DRIVE series features three models of compact drives, each designed for seamless integration into the upper frame profile. Utilizing a tooth belt that runs along the door leaf, these motors ensure smooth operation and high efficiency, requiring a minimum installation space of 50mm from the top edge of the upper frame to the bottom edge of the ceiling.

WOW.DRIVE.MOD.A: This safety-focused drive offers a maximum pulling force of 110N, supporting door leaf weights up to 350kg. Equipped with electronic closing-force limitation and end-position control, it features sensitivity control for user-friendly operation. Suitable for holdto-run or automatic modes, it meets the low energy standards of EN 16005.

WOW.DRIVE.MOD.B: With a robust pulling force of 400N, this model accommodates door leaf weights up to 700kg. Like Model A, it includes electronic closing-force limitation and endposition control, ensuring safe and precise operation. The drive is also operable in hold-to-run or automatic mode, maintaining low energy consumption as per EN 16005 standards.

WOW.DRIVE.MOD.C: Our most powerful option, this drive provides an impressive pulling force of 680N, handling door leaf weights up to 1200kg. It features the same advanced safety functions as the previous models, including electronic controls and sensitivity adjustments, allowing for effortless manual movement exceeding 400N. It operates efficiently in either holdto-run or automatic mode, compliant with EN 16005 low energy regulations.

Choose the WOW.DRIVE series for cutting-edge performance, safety, and flexibility in your minimal WOW doors and windows.

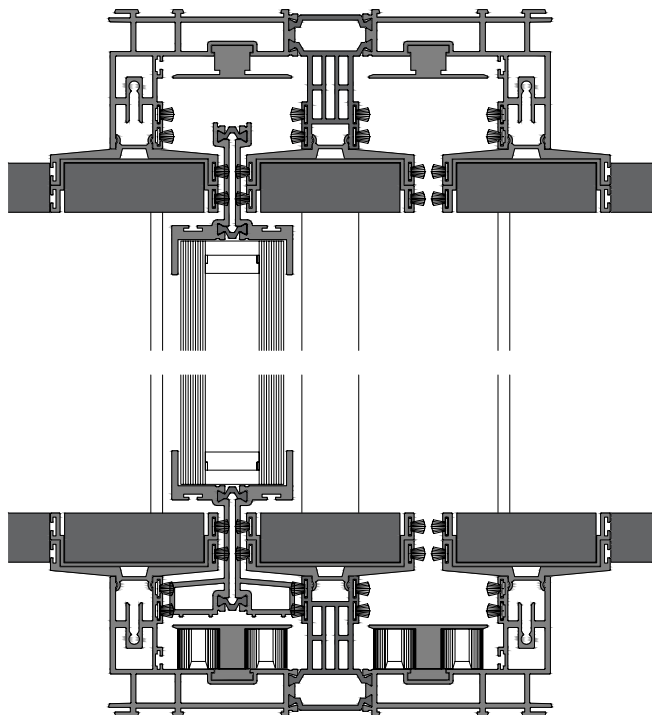
INVISI TOP & BOTTOM

WOW concealed door systems offers the flexibility to hide the bottom track, a standard feature that is typically visible.

For a more streamlined look, we provide custom solutions where the bottom track is recessed below the finished floor level (WOW INVISI), maintaining a clean and unobtrusive design.

Additionally, we can custom-manufacture the top frame to integrate seamlessly with your ceiling material, allowing it to be hidden and achieving a fully integrated appearance.

This approach ensures that both the top and bottom of your sliding doors blend harmoniously with your space, creating a sophisticated and cohesive look.



Infinite limits.

43



WOW VISTA 42

Our Vision

OUR VISION

At Windows of the World (WOW), our vision is deeply rooted in a rich history of craftsmanship and innovation. For years, we have dedicated ourselves to redefining the boundaries of design, continually striving to enhance the experience of spaces through our premium products. Each window and door we create is not merely a functional element; it is a testament to our legacy of excellence and a reflection of the artistry that has shaped our brand. Our history is woven with stories of passion, creativity, and an unwavering commitment to advancing the field of architectural design.

Quality is the cornerstone of our philosophy. We meticulously select the finest materials and employ cutting-edge technologies to ensure that every product meets the highest standards of performance and durability. Our attention to detail is evident in every facet of our minimalist sliding doors and complementary systems. We believe that true luxury lies in the subtleties—the smooth operation, the elegant lines, and the seamless integration into your living space. Our products are designed not only to enhance aesthetics but also to provide unparalleled functionality, allowing our clients to experience the perfect blend of beauty and utility.

Moreover, we recognize our responsibility towards the environment. Our commitment to reducing our footprint is evident in our sustainable practices and eco-friendly materials. We strive to innovate in ways that honor our planet, creating products that are energy-efficient and environmentally conscious. By integrating sustainability into our design philosophy, we ensure that our legacy is not only one of beauty and quality but also of respect for the world we inhabit.

As we look to the future, we remain steadfast in our dedication to delivering top-quality service to our clients. We understand that each project is unique, and we take pride in offering personalized solutions that cater to the individual needs and visions of our customers. Our team of experts is always ready to assist, ensuring a seamless journey from concept to completion.

In conclusion, at WOW, we are more than just a manufacturer of windows and doors; we are visionaries committed to crafting exceptional experiences. Our history, quality, and environmental responsibility unite to form a brand that stands for high-end design and client satisfaction.

Join us in embracing the future of architectural elegance, where every detail speaks to our dedication to excellence.

Infinite limits.

Feeling nature from inside.
No barriers to the world.



Infinite limits.

WOW INVISI 42

infinite limits

A black and white photograph of a modern interior space. In the foreground, a large, textured sofa with several dark pillows is positioned on a light-colored floor. Behind the sofa, two modern deck chairs are visible. A large window in the background offers a view of a lake and a range of mountains. The image is overlaid with a network of thin white lines forming various geometric shapes. The website address 'www.windowsoftheworld.com' is centered in the middle of the image.

www.windowsoftheworld.com